

We have pleasure in presenting the Spare Parts Catalogue for 'Pulsar 180 cc' UG III Motorcycle. This catalogue has been specially designed to assist you in selecting the correct parts for procurement to maintain 100% availability.

The Bajaj spares are subjected to the stringent quality control standards to ensure longer life of the vehicle. It is therefore necessary that only the Genuine Bajaj Spares are used.

In a continual effort to improve Performance and Efficiency of the vehicles, Specifications, Diagrams, Illustrations and Part Numbers can change without notice. Consequently, the description in this Spare Parts Catalogue cannot therefore be final and binding on us.

The modifications / alterations which are carried out after the issue of this catalogue, will be conveyed to you through our Service Circulars. You are requested to make necessary corrections in the Parts Catalogue as per the circulars so as to keep your catalogue up-to-date. This will ensure the appropriate and speedy delivery of the Spare Parts as the order placed will bear the latest part numbers.

In case, if you need any technical assistance contact the concerned Regional Team or write to us on the following address :

Bajaj Auto Limited
International Marketing Department
Akurdi, Pune 411 035 India
Phone : 020-27472851
Fax : 020-27407395
E-mail : exports@bajajauto.co.in

All information contained in this manual is based on the latest product information at the time of publication. Bajaj Auto Limited accepts no liability for any inaccuracies or omissions in this publication, although every possible care has been taken to make it as complete and accurate as possible. All procedures and specifications subject to change without prior notice. The right is reserved to make such changes at any time without prior notice and without incurring an obligation to make such changes to product manufactured previously. Contact your authorized Bajaj Dealer for the latest information on product improvements incorporated after this manual was issued.

DOC. NO.: 71110587

REV. 01 FEB. 10 RB

Instructions for using the Catalogue

1. How to Read the Catalogue : Open the catalogue and from the pictorial index locate the group in which the part you want to find is present. Turn over to the concerned page number (as given by pictorial index). Now find out the figure of the part you wish to order. Write down the part number against that particular figure number from the text.

In case, if you have the part number and you need the other details, the part index can be used. The part index (at the end of the catalogue) will give you the figure and page number of the part you wish to order.

2. How to Order Spare Parts : The part number and the description of the part required should be invariably mentioned in the order as per the catalogue text.

The latest part number as conveyed through our service circulars should only appear on the order. In case of ordering painted components, colour shade of the components should be mentioned.

The quantity shown against the part number is the quantity per vehicle for that group so that particular quantity should be multiplied by the number of sets required.

3. Part Number System: We have used 8 digit system for part numbers. The model or hardware item is indicated by first two digits or alphanumeric, the next two or four digits indicate main group and the last four or two digits indicate serial number in main group or serial number or subgroup of fastener respectively. Thus the part numbers will be indicated by 2-2-4 or 2-4-2 digit system. Understanding this system will enable you to identify the spare parts easily.

4. Abbreviations : The following abbreviations are used in this catalogue.

assly.	Assembly	V	Volts
N.I.	Not illustrated	W	Watts
C'case	Crankcase	accl.	Accelerator
Cyl	Cylinder	Comp.	Complete
o/s.	Over size	Fr	Front
Std.	Standard	L	Length
A/t.	Alternate	Rr	Rear
R.H.	Right hand	Hex.	Hexagonal
L.H.	Left hand	AR	As required

INDEX

No.	Description	Page No.	No.	Description	Page No.
1	Cover Cylinder Head	1	34	Front Disc Brake	40
2	Cylinder Head	2	35	Rear Hub	41&42
3	Valve	3	36	Rear Brake Pedal	43
4	Camshaft / Tensioner	4	37	Handle Bar	44&45
5	Cylinder & Piston	5	38	Front Fork	46&47
6	Crankshaft	6	39	Painted Parts & Decals	48&49
7	Balancer & Balancer Idler Gear	7	40	Petrol Cock, Cap Tank & Gauge Fuel	50
8	Transmission	8&9	41	Fitting - Petrol Tank, Side Cover & Cover seat	51
9	Change Drum/ Shift Fork	10	42	Meter Assly.	52
10	Gear Change Mechanism	11	43	Chain Case	53
11	Engine Assly & Crankcase RH	12	44	Head Lamp & Fairing	54
12	Crankcase LH	13&14	45	Indicator Light Assly.	55
13	Cover RH	15&16	46	Tail Lamp Assly/Front & Rear No.Plates	56
14	Cover Magneto	17	47	Electrical Equipments	57&58
15	Clutch	18&19			
16	Kick Starter Mechanism	20			
17	Carburettor	21			
18	Air Cleaner Comp.	22			
19	Silencer Assly	23			
20	Seat Assly/Seat Lock & Tool Kit	24			
21	Oil Pump	25			
22	Magneto/C.D.I./H.T.Coil	26&27			
23	Starter Assly (For Self Start)	28&29			
24	Engine Mountings	30			
25	Frame & Frame fitting	31			
26	Swing Arm / Rear Shock Absorber	32			
27	Rider Foot rest	33			
28	Pillion Foot rest / Holder	34			
29	Mudguard Front & Rear	35			
30	Stand Assembly	36			
31	Tyre/ Tube /Rim	37			
32	Front Hub (For Disc Brake)	38			
33	Front Master Cylinder (For Disc Brake)	39			

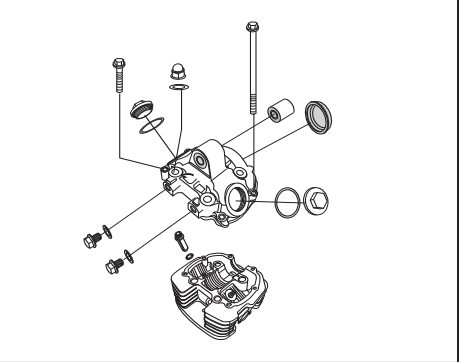
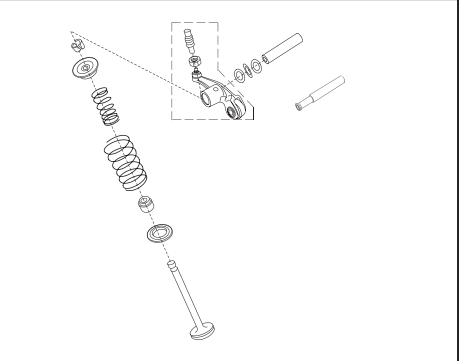
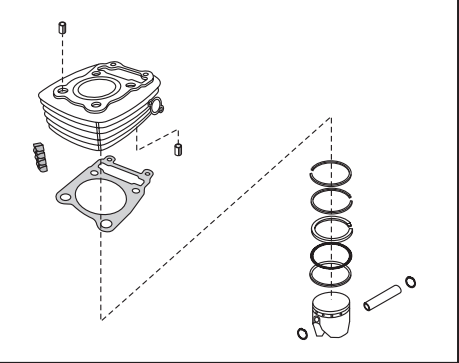
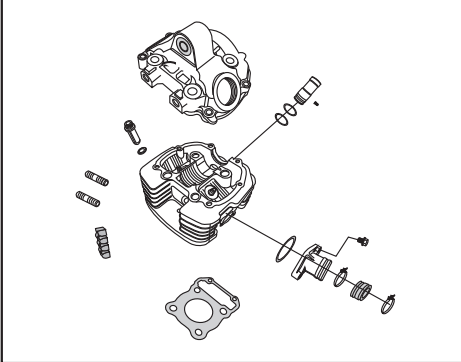
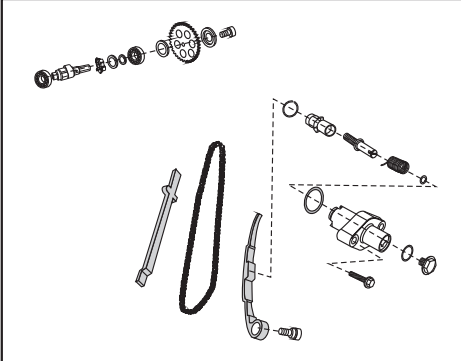
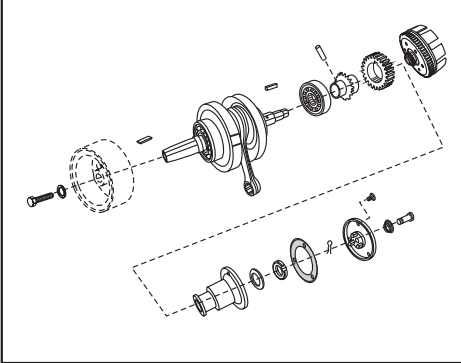
PLATE NO. : 1 COVER CYLINDER HEAD	PAGE NO.: 1
	
PLATE NO. : 3 VALVE	PAGE NO.: 3
	
PLATE NO. : 5 CYLINDER AND PISTON	PAGE NO.: 5
	

PLATE NO. : 2 CYLINDER HEAD	PAGE NO.: 2
	
PLATE NO. : 4 CAMSHAFT / TENSIONER	PAGE NO.: 4
	
PLATE NO. : 6 CARNKSHAFT	PAGE NO.: 6
	

PICTORIAL INDEX

BAJAJ
pulsar **180**

PLATE NO. : 7 BALANCER AND BALANCER IDLER GEAR	PAGE NO.: 7
--	----------------

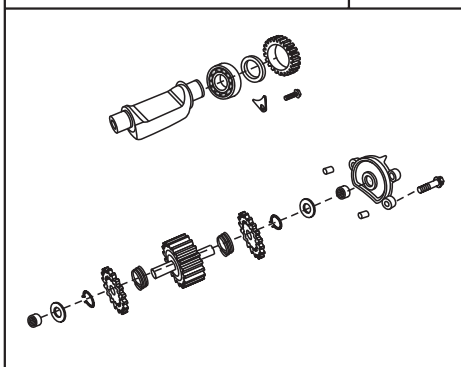


PLATE NO. : 9 CHANGE DRUM / SHIFT FORK	PAGE NO.: 10
---	-----------------

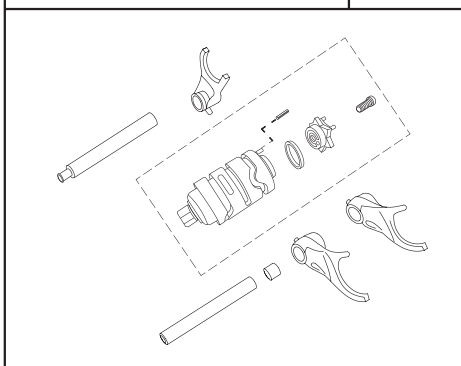


PLATE NO. : 11 ENGINE ASSLY. & CRANKCASE RH	PAGE NO.: 12
--	-----------------

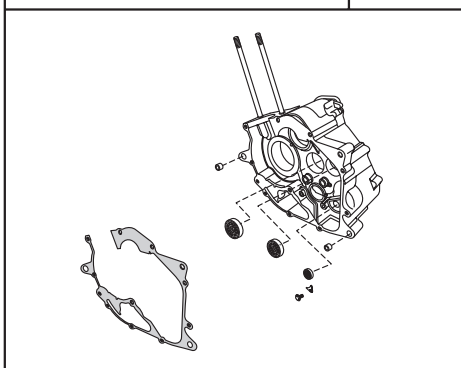


PLATE NO. : 8 TRANSMISSION	PAGE NO.: 8 & 9
-------------------------------	--------------------

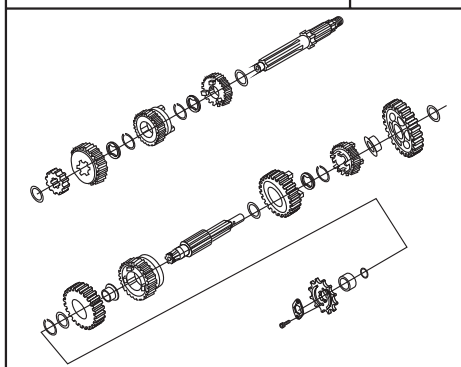


PLATE NO. : 10 GEAR CHANGE MECHANISM	PAGE NO.: 11
---	-----------------

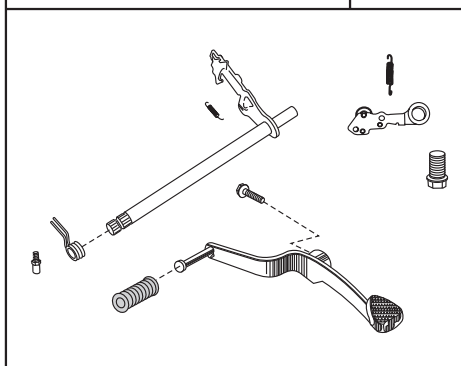
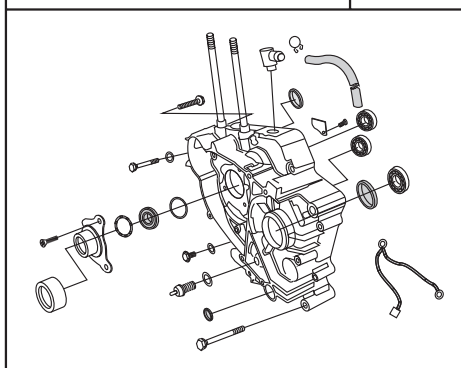


PLATE NO. : 12 CRANKCASE LH	PAGE NO.: 13 & 14
--------------------------------	----------------------



PICTORIAL INDEX

BAJAJ
pulsar **180**

PLATE NO. : 13 COVER RH	PAGE NO.: 15 & 16
----------------------------	----------------------

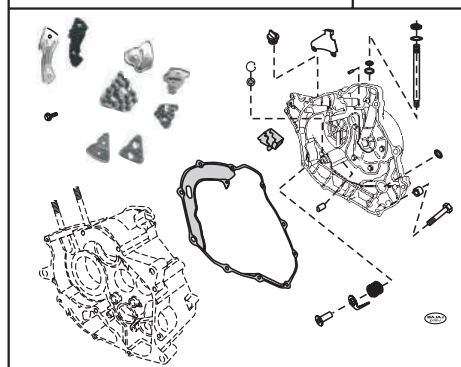


PLATE NO. : 15 CLUTCH	PAGE NO.: 18 & 19
--------------------------	----------------------

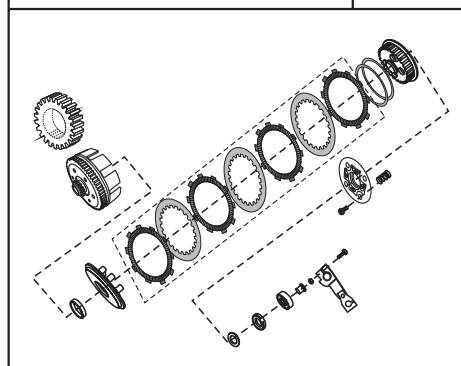


PLATE NO. : 17 CARBURETTOR	PAGE NO.: 21
-------------------------------	-----------------

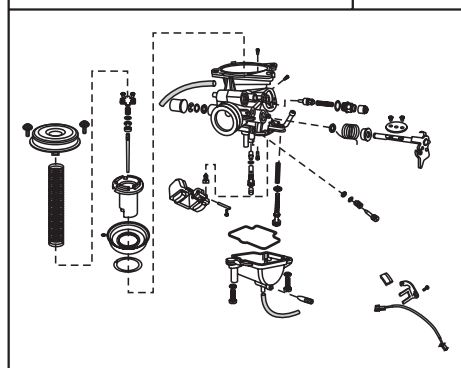


PLATE NO. : 14 COVER MAGNETO	PAGE NO.: 17
---------------------------------	-----------------

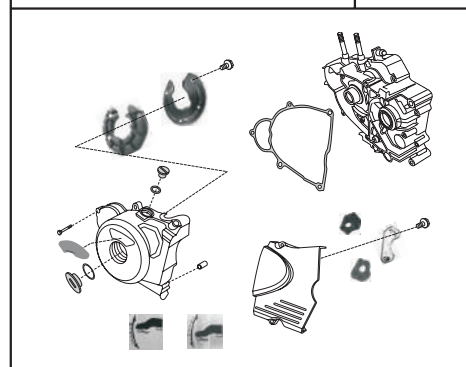


PLATE NO. : 16 KICK STARTER MECHANISM	PAGE NO.: 20
--	-----------------

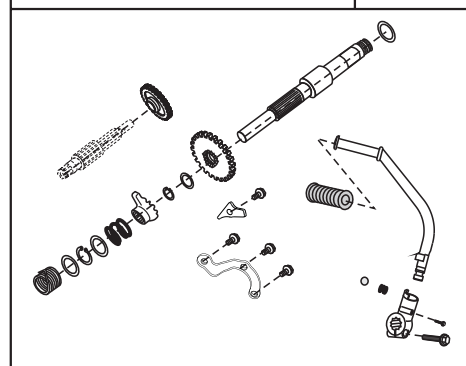
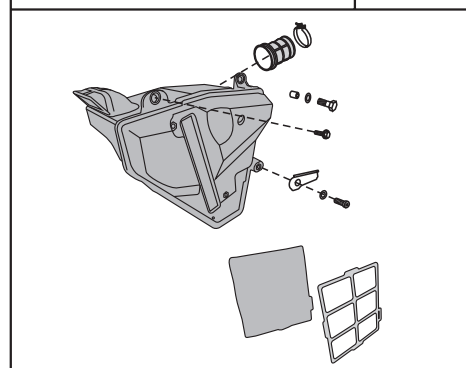


PLATE NO. : 18 AIR CLEANER COMP.	PAGE NO.: 22
-------------------------------------	-----------------



PICTORIAL INDEX

BAJAJ
pulsar **DTS-i** 180

PLATE NO. : 19	PAGE NO.:
SILENCER ASSLY.	23

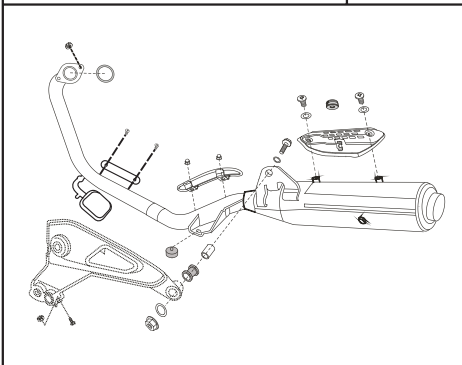


PLATE NO. : 21	PAGE NO.:
OIL PUMP	25

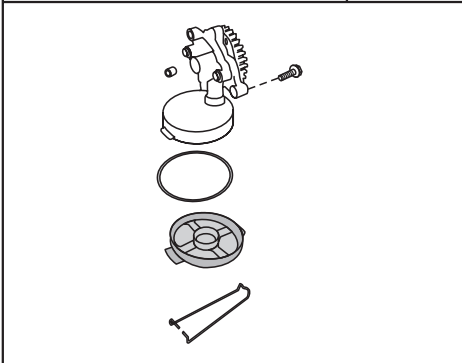


PLATE NO. : 23	PAGE NO.:
STARTER ASSLY. (FOR SELF START)	28 & 29

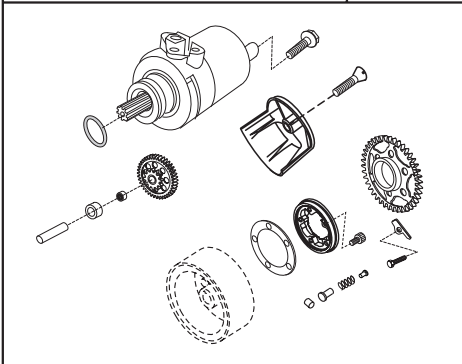


PLATE NO. : 20	PAGE NO.:
SEAT ASSLY/SEAT LOCK & TOOL KIT	24

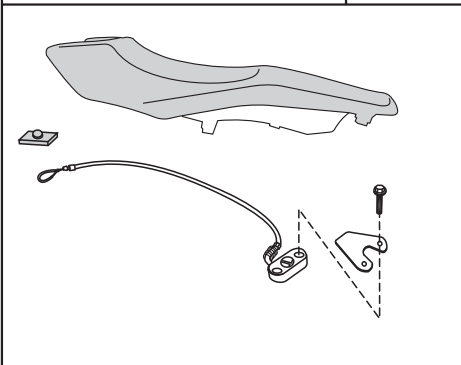


PLATE NO. : 22	PAGE NO.:
MAGNETO / C.D.I./H.T. COIL	26 & 27

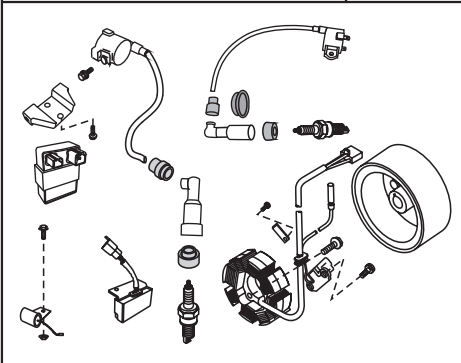
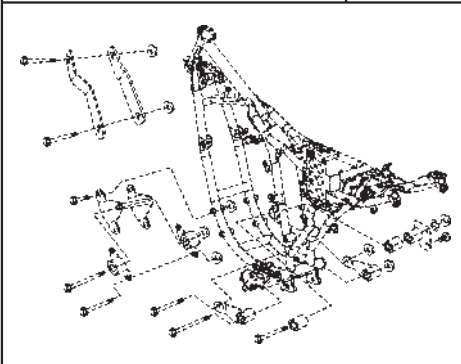


PLATE NO. : 24	PAGE NO.:
ENGINE MOUNTINGS	30



PICTORIAL INDEX

BAJAJ
pulsar **DTS-i** 180

PLATE NO. : 25	PAGE NO.:
FRAME & FRAME FITTINGS	31

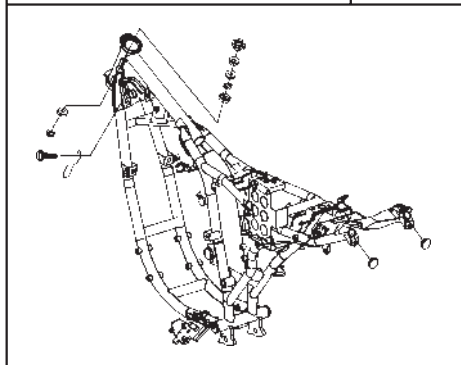


PLATE NO. : 27	PAGE NO.:
RIDDER FOOT REST	33

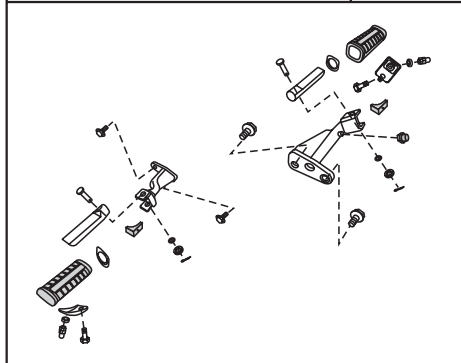


PLATE NO. : 29	PAGE NO.:
MUDGUARD FRONT & REAR	35

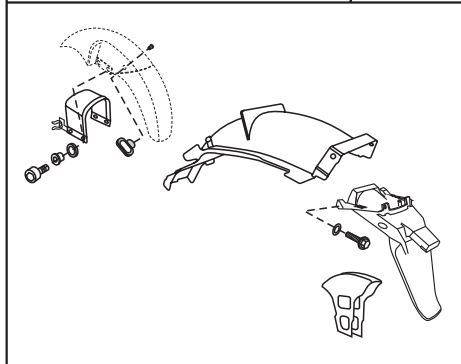


PLATE NO. : 26	PAGE NO.:
SWING ARM / REAR SHOCK ABSORBER	32

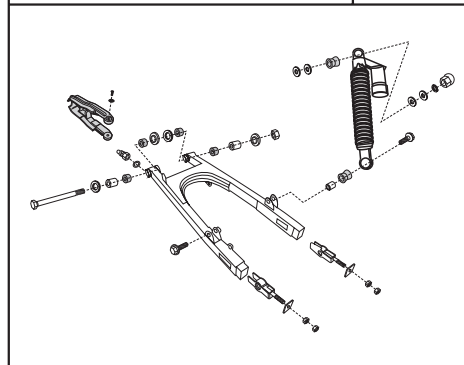


PLATE NO. : 28	PAGE NO.:
PILLION FOOT REST / HOLDER	34

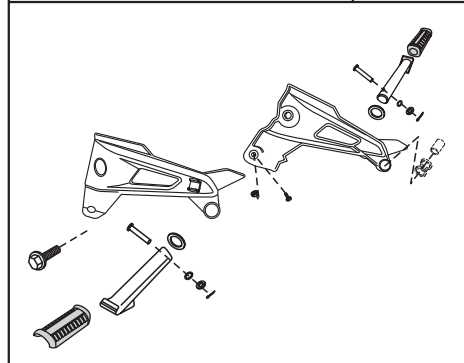
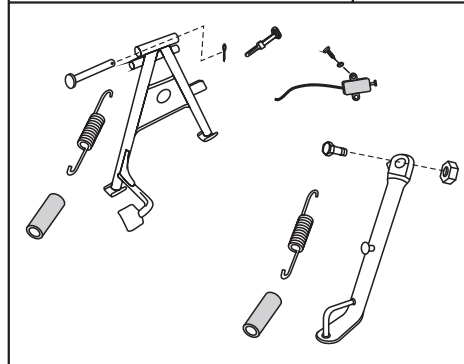


PLATE NO. : 30	PAGE NO.:
STAND ASSLY.	36



PICTORIAL INDEX

BAJAJ
pulsar DTS-i 180

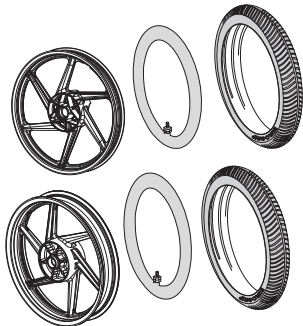
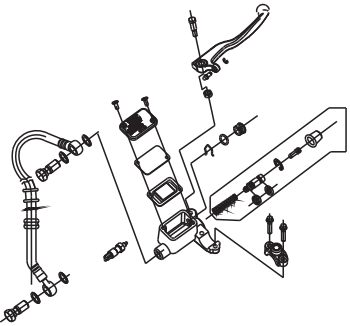
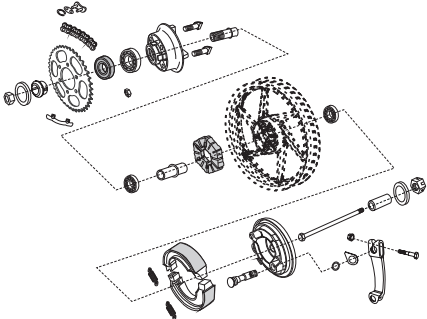
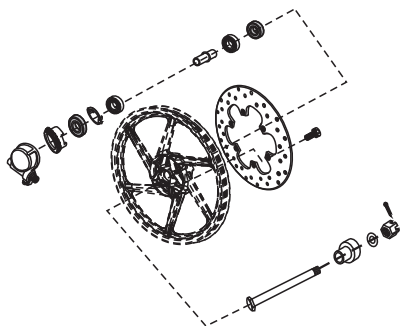
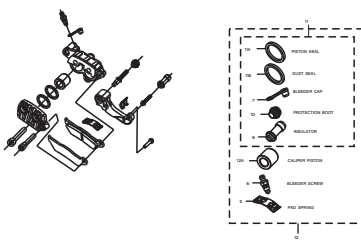
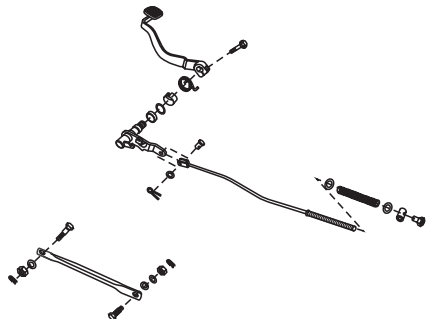
PLATE NO. : 31 TYRE / TUBE / RIM	PAGE NO.: 37
	
PLATE NO. : 33 FRONT MASTER CYLINDER (FOR DISC BRAKE)	PAGE NO.: 39
	
PLATE NO. : 35 REAR HUB	PAGE NO.: 41 & 42
	

PLATE NO. : 32 FRONT HUB (FOR DISC BRAKE)	PAGE NO.: 38
	
PLATE NO. : 34 FRONT BRAKE	PAGE NO.: 40
	
PLATE NO. : 36 REAR BRAKE PEDAL	PAGE NO.: 43
	

PICTORIAL INDEX

BAJAJ
pulsar DTS-i 180

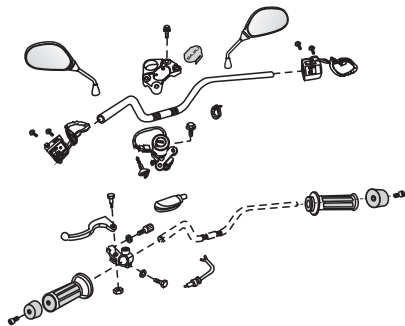
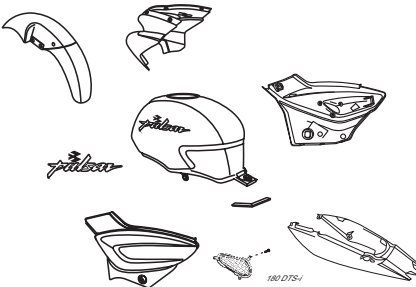
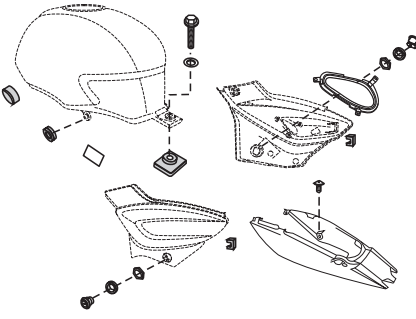
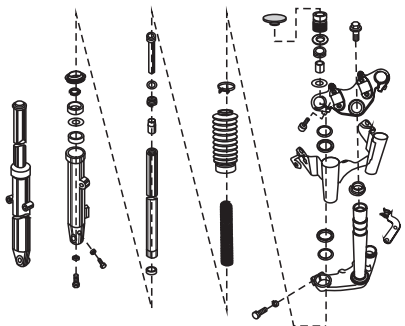
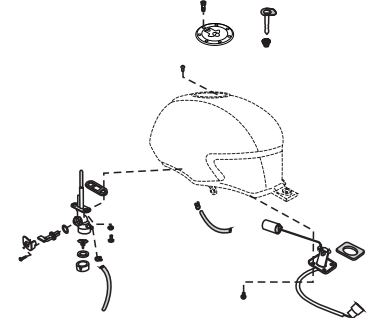
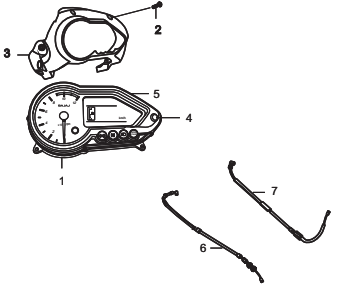
PLATE NO. : 37 HANDLE BAR	PAGE NO.: 44 & 45
	
PLATE NO. : 39 PAINTED PARTS & DECALS	PAGE NO.: 48 & 49
	
PLATE NO. : 41 PETROL TANK, SIDE COVER AND COVER SEAT	PAGE NO.: 51
	

PLATE NO. : 38 FORK ASSEMBLY	PAGE NO.: 46 & 47
	
PLATE NO. : 40 PETROL COCK, CAP TANK AND GAUGE FUEL	PAGE NO.: 50
	
PLATE NO. : 42 METER ASSEMBLY	PAGE NO.: 52
	

PICTORIAL INDEX

BAJAJ
pulsar **DTS-i** 180

PLATE NO. : 44	PAGE NO.:
CHAIN CASE	53

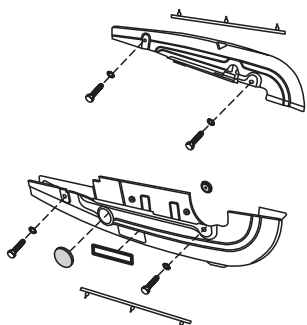


PLATE NO. : 46	PAGE NO.:
INDICATOR LIGHTS ASSLY.	55

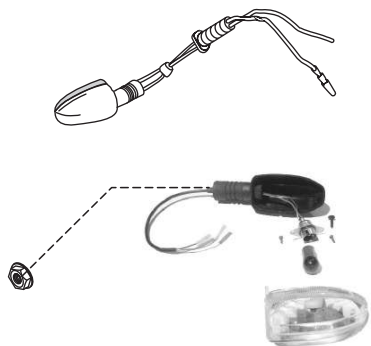


PLATE NO. : 48	PAGE NO.:
ELECTRICAL EQUIPMENTS	57 & 58

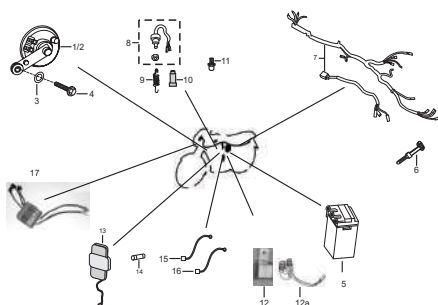
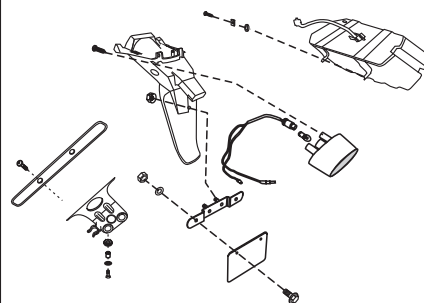
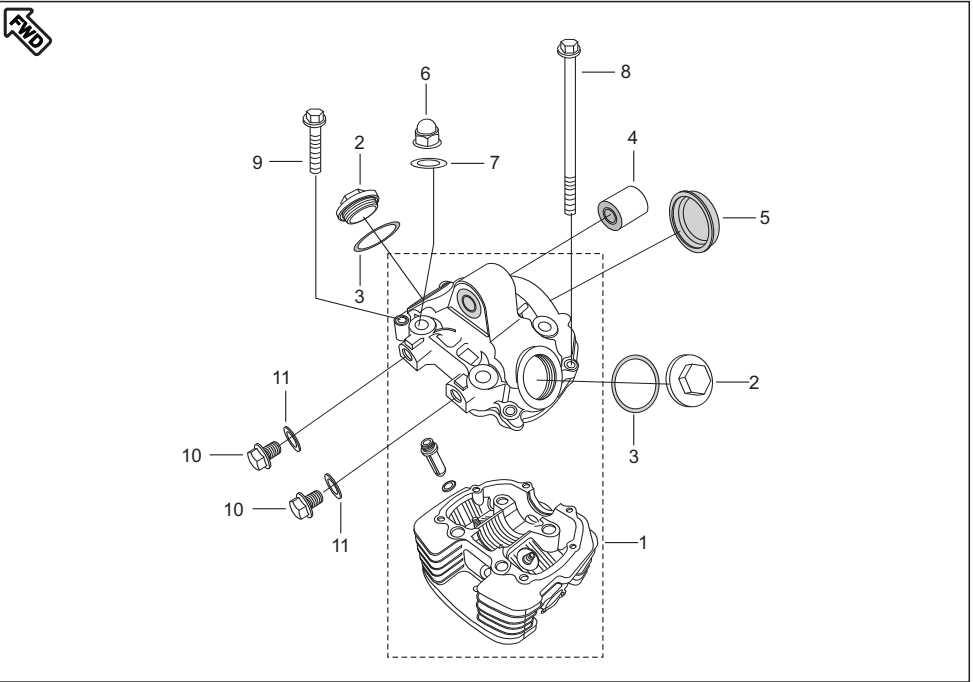


PLATE NO. : 45	PAGE NO.:
HEAD LAMP & FAIRING	54

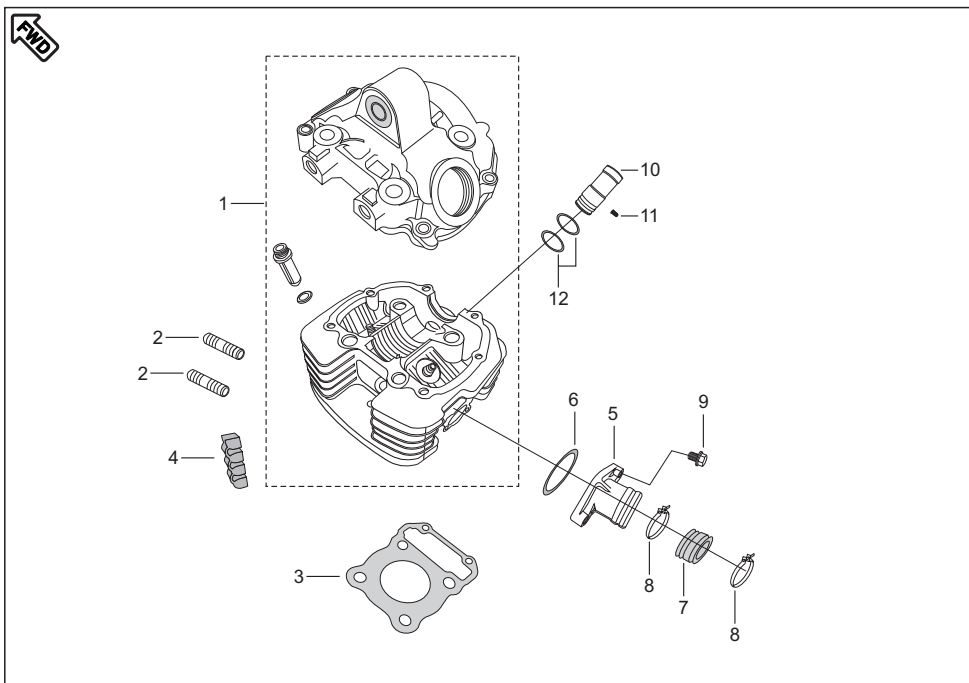


PLATE NO. : 47	PAGE NO.:
TAIL LAMP ASSEMBLY / FRONT NUMBER PLATE	56

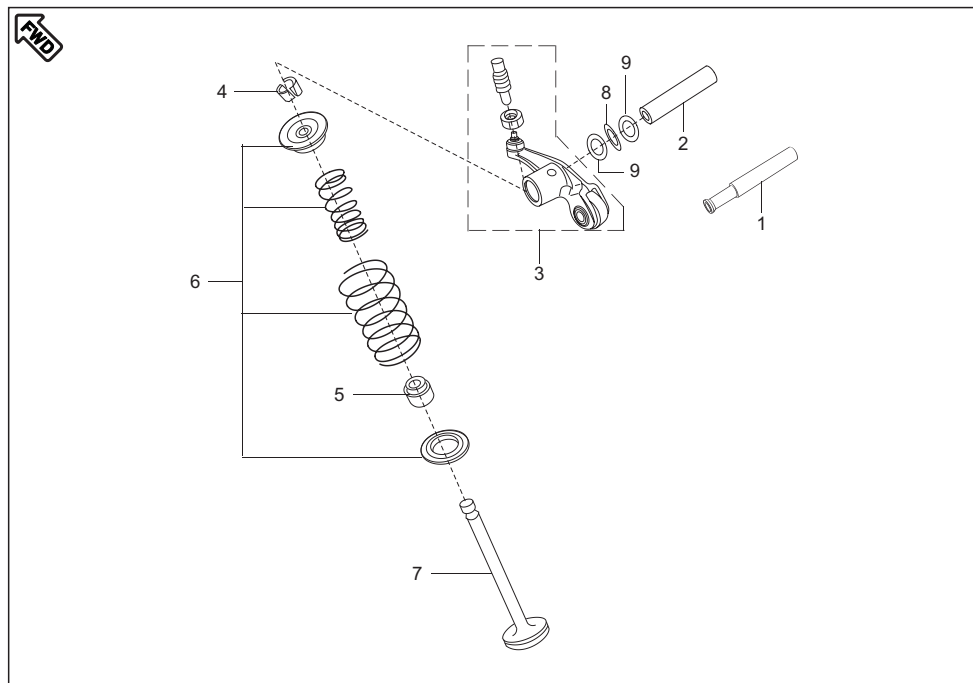




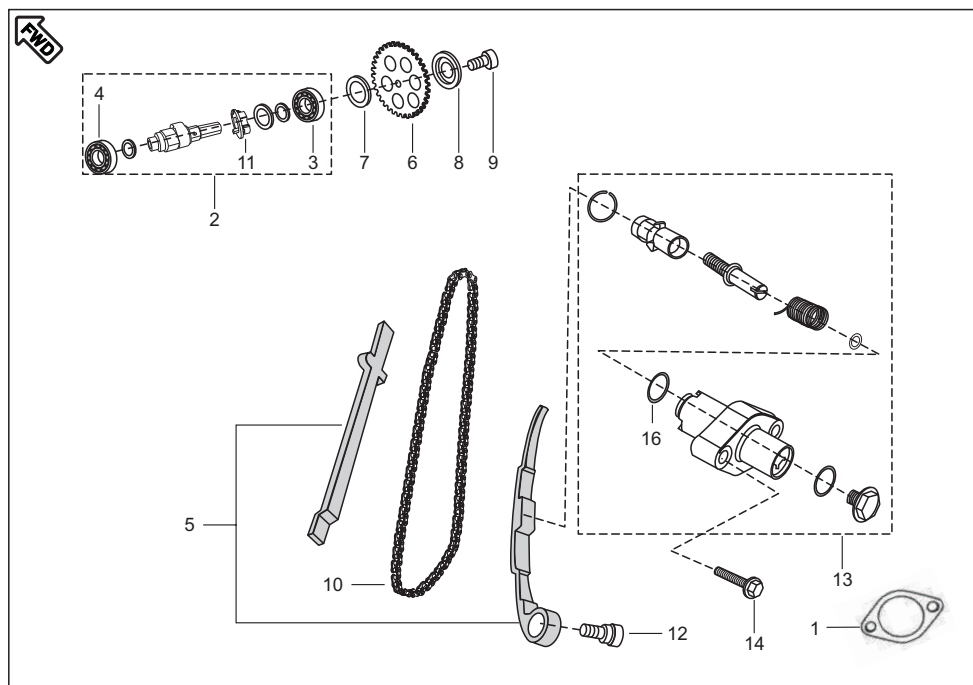
No.	Part No.	Description	Qty/ Veh.	Remarks
1	DJ 1012 69	Head Cylinder with Cover	1	Ref. Page No. 60
2	DJ 1012 17	Cover Tappet	2	
3	36 DS10 01	'O' Ring Kit for Cover Cyl. Head	1	
4	DS 1011 66	Silent Bush (V)	1	
5	DS 1010 96	Camshaft Cap	1	
6	39 2647 15	Dommed Cap Nut	4	
7	DS 1010 84	Copper Washer	4	
8	39 2532 04	Hex. Bolt with Flange	2	
9	39 1075 04	Hex. Bolt / Flange	4	
10	DH 1012 72	Plug	2	
11	DG 1014 98	Washer	2	Alt. 31101106



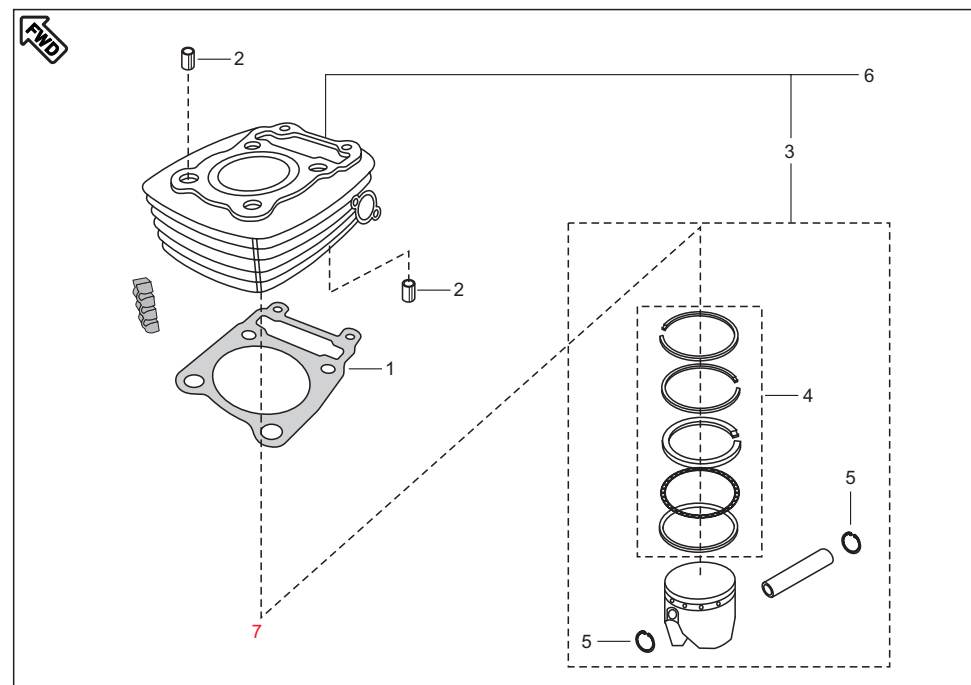
No.	Part No.	Description	Qty/ Veh.	Remarks
1	DJ 1012 69	Head Cylinder with Cover	1	
2	39 1660 05	Stud (Exhaust)	2	
3	DJ 1010 12	Gasket Cylinder Head	1	
4	DH 1015 08	Damper Cylinder Head	5	
5	DJ 1012 15	Intake Pipe	1	
6	39 2539 21	'O' Ring (Intake Pipe)	1	
7	DJ 1210 22	Carburettor Insulator	1	
8	DH 1210 38	Clamp for Insulator	2	
9	39 1674 04	Hex. Bolt / Flange	2	
10	DH 1110 12	Sleeve - Spark Plug	1	
11	39 2608 01	Grub Screw	1	For Sleeve Spark Plug
12	36 DS10 01	'O' Ring Kit for Cover Cyl. Head	1	Ref. Page No. 60



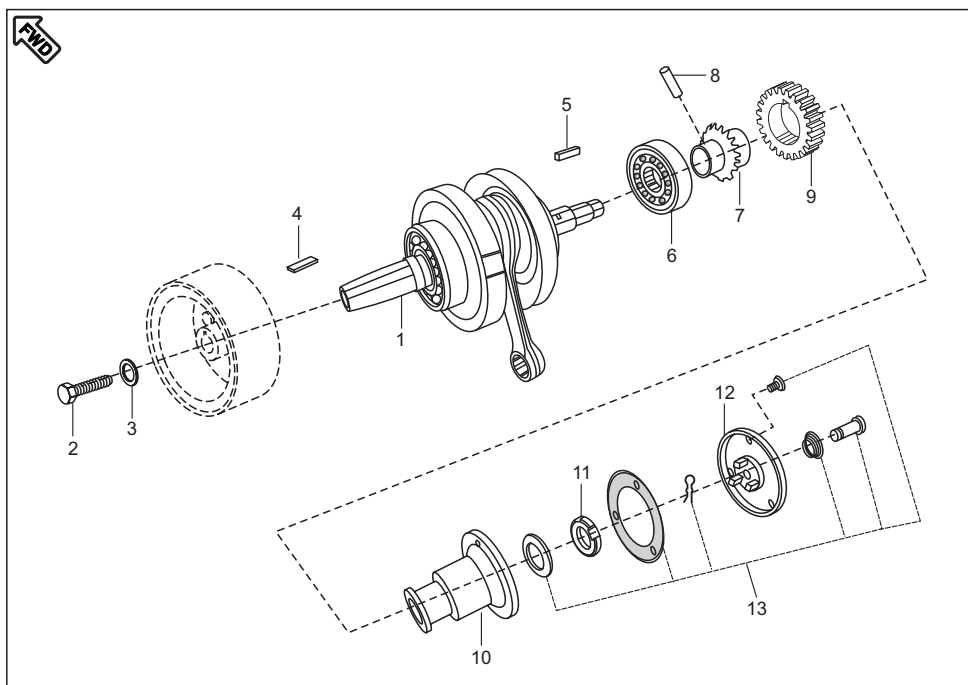
No.	Part No.	Description	Qty/ Veh.	Remarks
1	DS 1013 35	Rocker Arm Shaft - Intake	1	
2	DS 1013 36	Rocker Arm Shaft - Exhaust	1	
3	DS 1013 33	Rocker Arm with roller	2	
4	DG 1010 29	Cotter valve	4	
5	39 2017 19	Seal valve stem	2	
6	36 DK00 05	Valve Repair Kit	1	Ref. Page No. 60
7	36 DJ10 04	Valve Kit	1	Ref. Page No. 60
8	DS 1013 66	Wave washer	2	
9	59 1100 02	Plain washer	4	



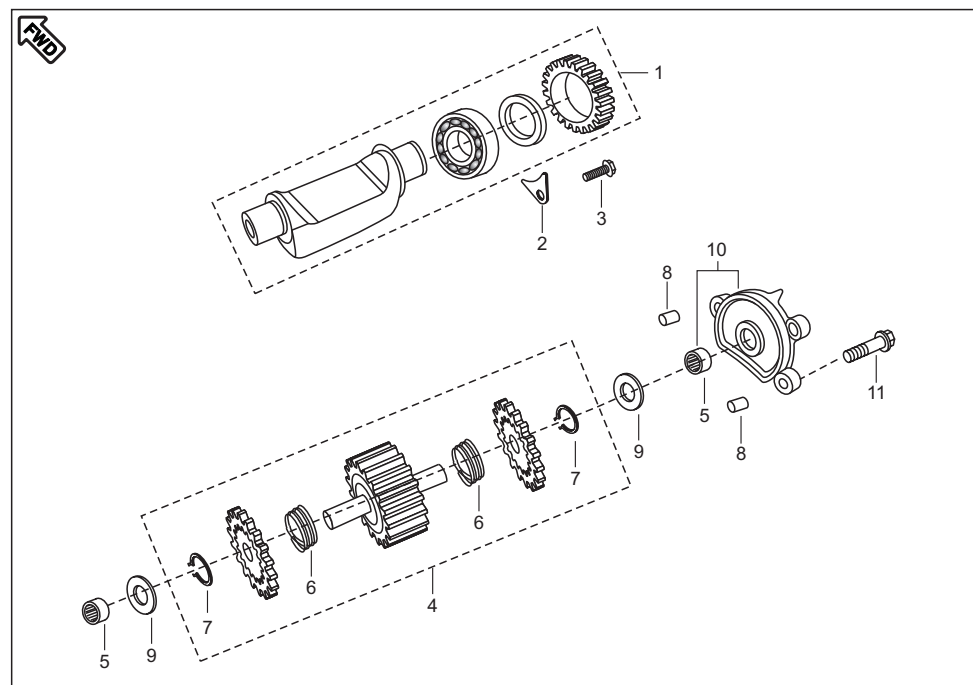
No.	Part No.	Description	Qty/ Veh.	Remarks
1	CS 1011 28	Gasket Tensioner	1	
2	DH 1017 03	Camshaft assembly	1	
3	39 2542 20	Bearing ball 15X42X13	1	
	JC 1010 86	Bearing ball 6302 RS1/C3H	1	
4	39 1880 20	Bearing ball 15x32x9 (6002-C3)	1	
	JC 1010 85	Bearing ball 6002/C3H	1	
5	36 DH10 03	Guide chain Kit	1	Ref. Page No.60
	JC 1010 38	Guide chain kit	1	From Oct07
6	DS 1012 76	Sprocket cam Driven	1	
7	DH 1014 12	Collar cam Sprocket	1	
8	DH 1010 48	Special camshaft washer	1	
9	39 2198 04	Hex. Soc. Head cap Bolt	1	
10	JC 1010 35	Cam Chain	1	
11	DJ 1011 37	Decomp Assly.	1	
12	DH 1010 11	Cam chain Tensioner pivot Bolt	1	
13	DS 1012 77	Tensioner assly.	1	
	JC 1010 34	Tensioner assly.	1	From. Oct07
14	39 1673 04	Hex Bolt / Flange	2	From 26Apr08 (C5)
15	39 1013 21	"O"Ring	1	From 26Apr08 (C5) N.I
16	39 2669 21	"O"Ring	1	



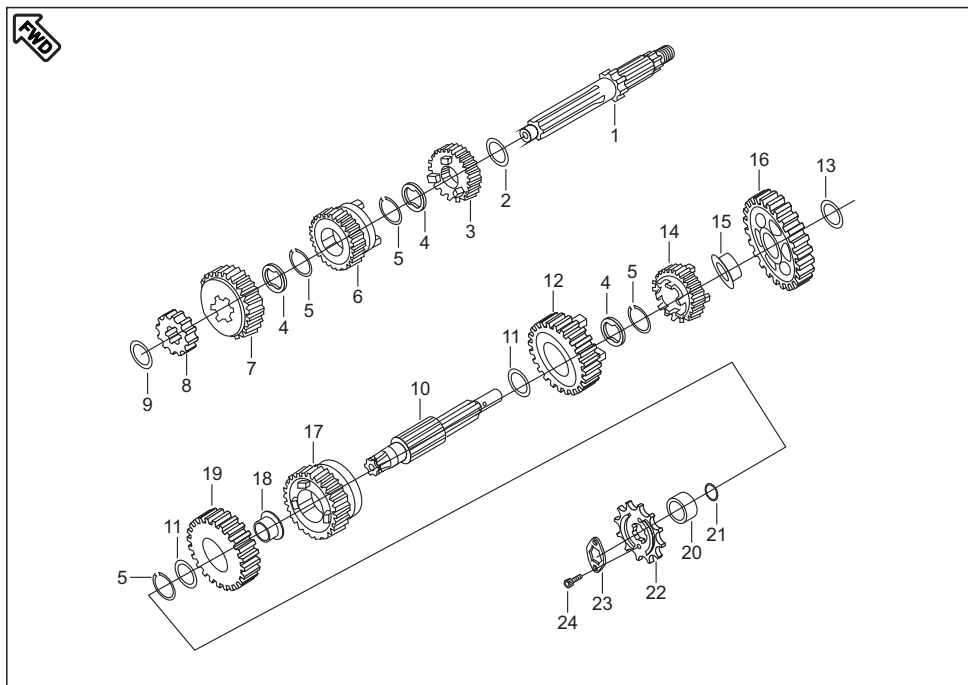
No.	Part No.	Description	Qty/ Veh.	Remarks
1	DJ 1010 04	Gasket Cylinder	1	
2	39 2181 06	Pin dowel	4	
3	DJ 1011 58	Piston Assly. Std.	1	
4	DJ 1011 06	Ring Set Piston	1	
5	39 2132 17	Ring Snap	2	
6	DJ 1013 27	Cylinder Block / Piston Assly.	1	From 26Apr08 (C5)
	DJ 1013 71	Cylinder Block / Piston Assly. (CLS)	1	From 13Feb09 (C13)



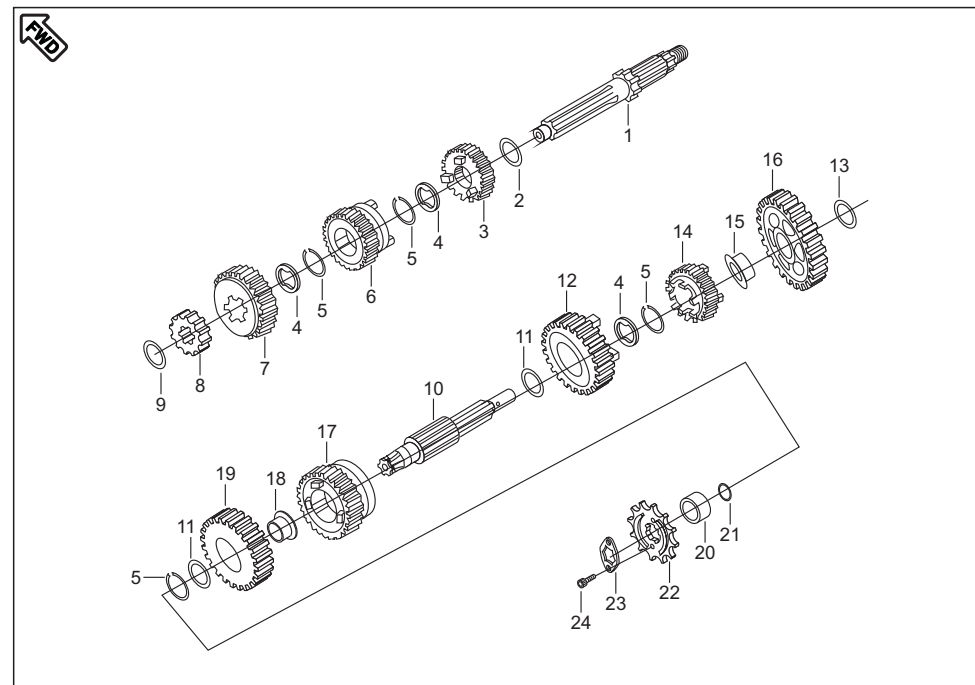
No.	Part No.	Description	Qty/ Veh.	Remarks
1	DJ 1012 23	Crankshaft assly. comp.	1	
2	39 2183 04	Bolt	1	
3	39 2165 11	Plain washer	1	
4	31 1011 73	Key woodruff	1	
5	DS 1011 54	Square Key	1	
6	39 1931 20	Bearing Ball	1	
7	DS 1012 75	Sprocket cam drive	1	
8	39 2203 07	Parallel pin	1	
9	36 DH40 06	Set primary driver & driven	1	
10	DH 1010 64	Body centrifugal oil filter	1	
11	DH 1011 95	Nut	1	7mm. (Height)
12	DH 1010 65	Cover centrifugal oil filter	1	
13	36 DK00 07	Kit centrifugal oil filter	1	Ref. Page No. 60



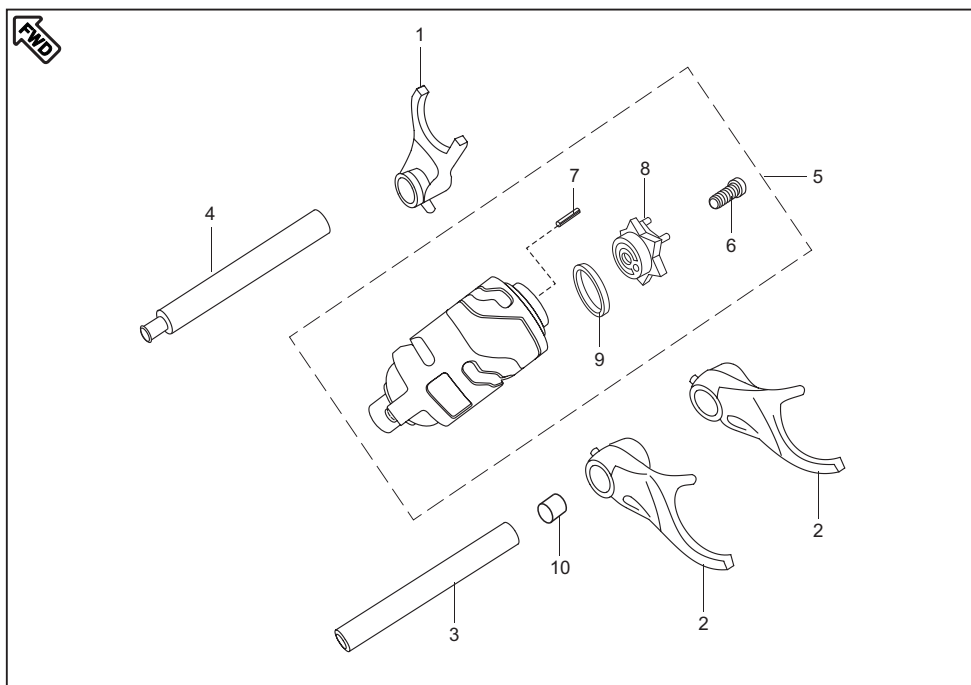
No.	Part No.	Description	Qty/ Veh.	Remarks
1	DJ 1010 22	Body Balancer Assly.	1	
2	DH 1010 72	Bearing stopper	1	
3	39 1672 04	Bolt	1	
4	DJ 1011 34	Assly. Balancer Idler Gear comp.	1	Alt. DH101432
5	39 2152 20	Needle roller bearing	2	
6	DJ 1011 33	Spring torsion Balancer Idler	2	
7	39 2557 17	Circlip ext.	2	
8	39 1686 06	Dowel Pin	2	
9	39 1620 11	Thrust washer	2	
10	52 DH01 77	Balancer Idler Holder	1	
11	39 1674 04	Bolt	3	



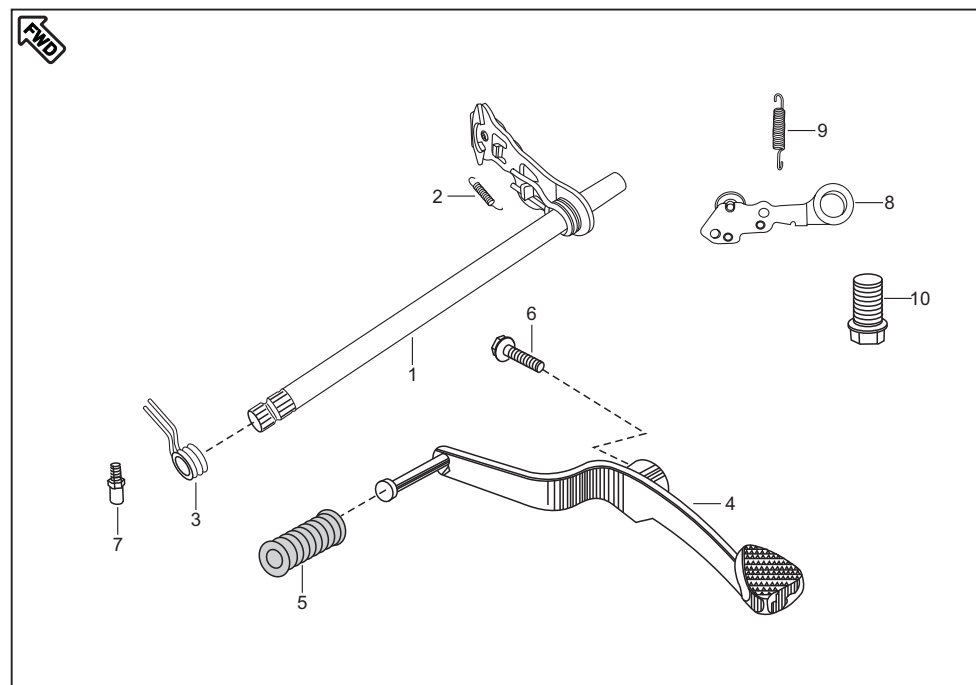
No.	Part No.	Description	Qty/ Veh.	Remarks
1	DK 1011 25	Shaft Input Transmission	1	From 13Feb09 (C13)
	DK 1014 71	Shaft Input Transmission (CLS)	1	
2	39 2158 11	Washer thrust	1	
3	DH 1010 78	Gear 4th Drive	1	
4	DH 1010 79	Washer Spline	3	
5	DH 1012 35	External Circlip	4	
6	DH 1010 80	Gear 3rd Drive	1	
7	DH 1010 82	Gear 5th drive	1	
8	DH 1010 84	Gear 2nd drive	1	
9	39 2160 11	Thrust washer	1	
10	DH 1014 16	Shaft output Transmission	1	
11	DH 1013 36	Washer Thrust	2	
12	DH 1011 08	Gear 3rd Driven	1	
13	39 2159 11	Thrust Washer	1	
14	DH 1011 10	Gear 4th Driven	1	
15	DH 1011 11	Bush 1st driven	1	



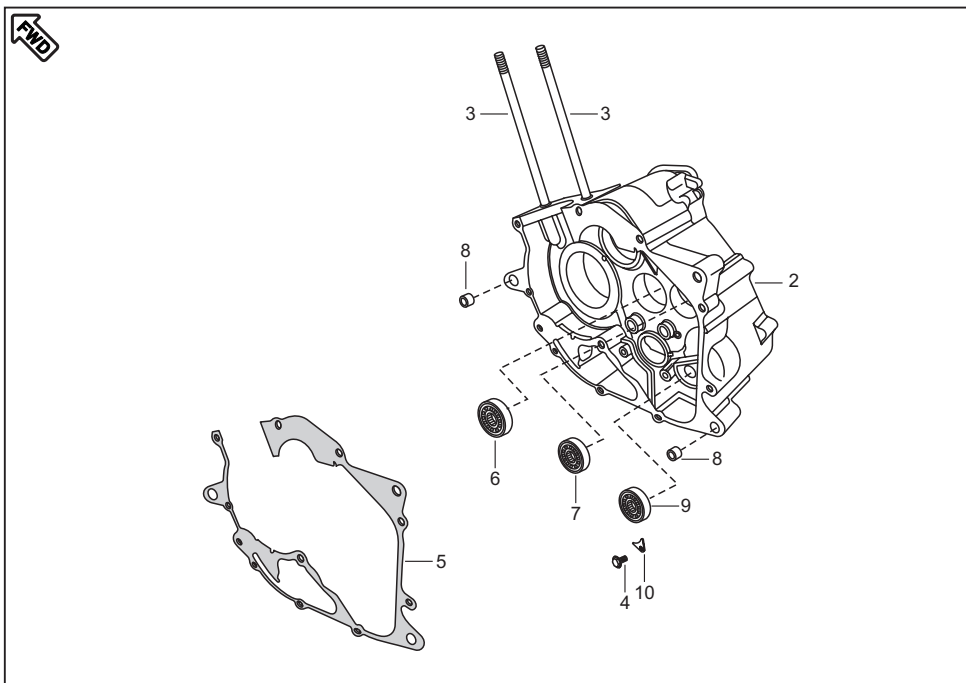
No.	Part No.	Description	Qty/ Veh.	Remarks
16	DJ 1011 10	Gear 1st driven	1	
17	DH 1011 13	Gear 5th Driven	1	
18	DH 1013 19	Bush 2nd driven	1	
19	DH 1013 33	Gear 2nd Driven	1	
20	DH 1011 16	Collar Sprocket	1	
21	30 1010 61	'O' Ring Sprocket Collar	1	
22	DH 1011 17	Sprocket Drive	1	
23	DJ 1010 63	Plate Drive Sprocket	1	
24	39 1062 04	Bolt Drive Sprocket	2	



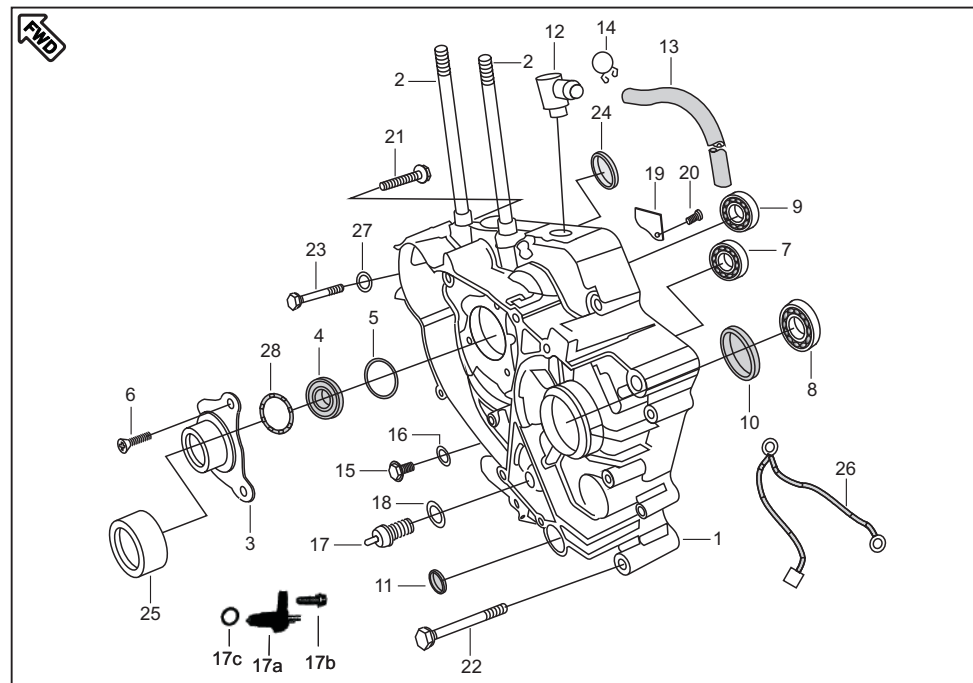
No.	Part No.	Description	Qty/ Veh.	Remarks
1	DK 1011 59	Fork Gear Shift Input	1	From 14Jul08 (C7)
2	DK 1011 60	Fork Gear Shift output	2	
3	DH 1011 46	Shaft Gear Shift Fork	1	
4	DH 1014 93	Shaft Gear Shift Fork	1	
5	DK 1013 82	Drum comp. Gear Shift	1	
6	39 2437 04	Bolt Socket	1	w.e.f. Mar. 07
7	39 2606 07	Parallel pin	1	
8	DK 1013 61	Guide Gear Shifter	1	
9	DH 1014 96	Spacer	1	
10	DK 1011 35	Bush fork gear shift	2	



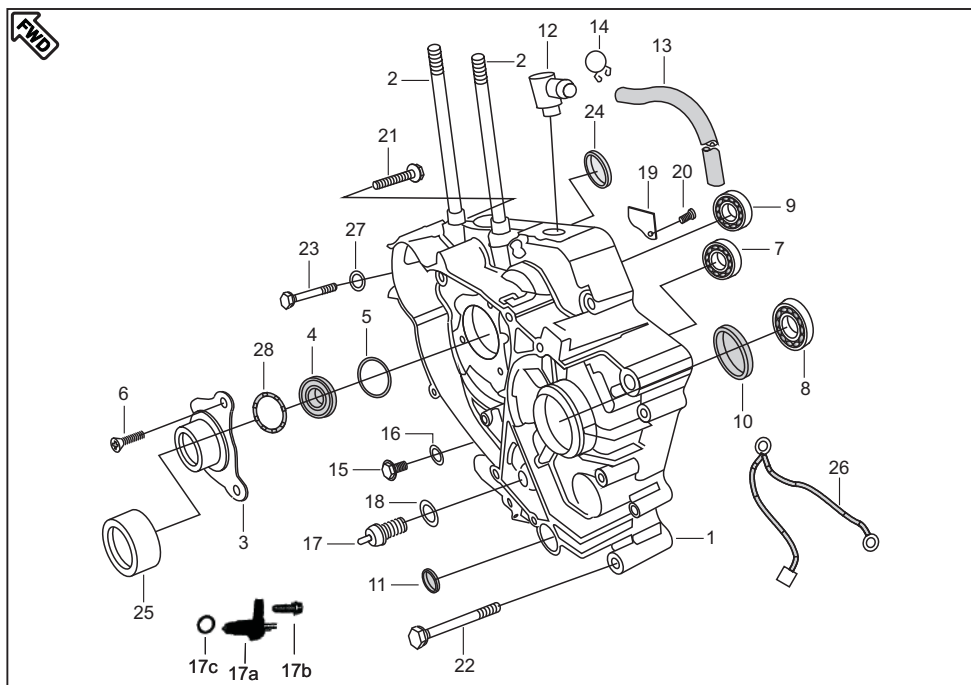
No.	Part No.	Description	Qty/ Veh.	Remarks
1	DH 1017 05	Lever comp. Gear Shifter	1	Alt. DH101134
2	DH 1017 14	Spring arm reset	1	
3	DH 1011 44	Spring Gear Shifter return	1	
4	DH 1011 65	Lever comp. change	1	
5	31 1011 08	Damper	1	
6	39 2453 04	Flanged Bolt	1	Alt. DH101397
7	DH 1012 25	Bolt Gear Shift drum Stopper	1	
8	DH 1015 03	Stopper gear shifter drum	1	
9	DH 1015 02	Spring gear shifter drum stopper	1	
10	DH 1010 13	Bolt shift change	1	



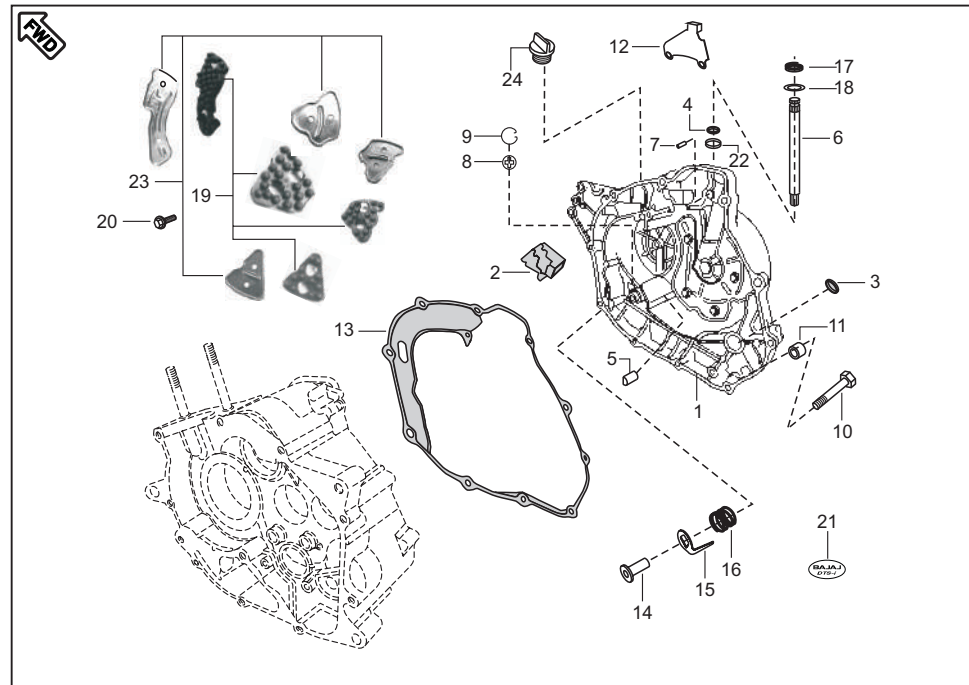
No.	Part No.	Description	Qty/ Veh.	Remarks
1	DJ 1012 31	Engine Assly.	1	N.I.
2	DJ 1012 13	Crankcase RH	1	
3	39 2531 05	Stud	2	
4	39 1074 04	Bolt Flanged	1	
5	DH 1010 06	Gasket Crankcase	1	
6	39 2583 20	Bearing Ball (For Input shaft)	1	(For Drum Comp. Gear Shift)
7	39 2602 20	Bearing Ball (For Output shaft)	1	
8	39 2180 06	Dowel Pin	2	
9	39 2601 20	Ball Bearing	1	
10	DH 1014 87	Plate Stopper	1	



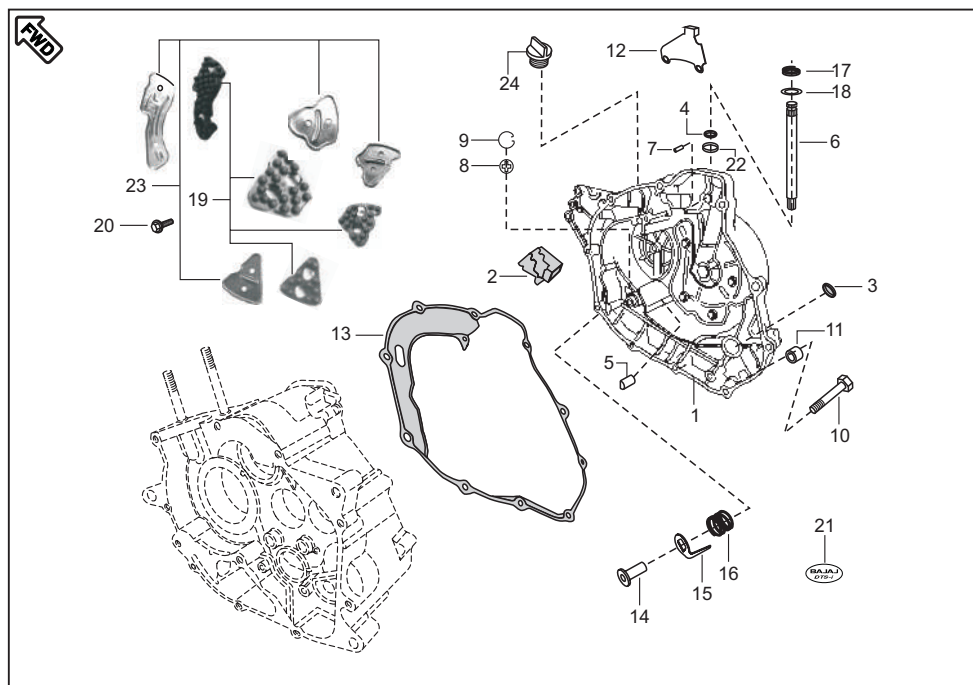
No.	Part No.	Description	Qty/ Veh.	Remarks
1	DJ 1013 20	Crankcase LH	1	plastic neutral switch From 13Feb09 (C13)
	DJ 1013 44	Crankcase LH (CLS)	1	
2	39 2531 05	Stud	2	
3	DH 1016 54	Guide starter Assly	1	
4	39 2188 19	Oil Seal	1	
5	DH 1014 23	O' Ring	1	
6	39 0752 01	C' Sunk Head Screw	3	
7	39 2603 20	Bearing Ball (For Input shaft)	1	
8	39 2583 20	Bearing Ball (For Output shaft)	1	
9	39 2185 20	Balancer LH Bearing	1	
10	39 2189 19	Oil Seal (For Output shaft)	1	
11	39 2190 19	Oil Seal (For Shift lever)	1	
12	DH 1012 03	Breather pipe	1	
13	DH 1012 46	Rubber tube	1	
14	28 1011 74	Spring Clip	1	
15	DH 1012 72	Plug (Drain Bolt)	1	



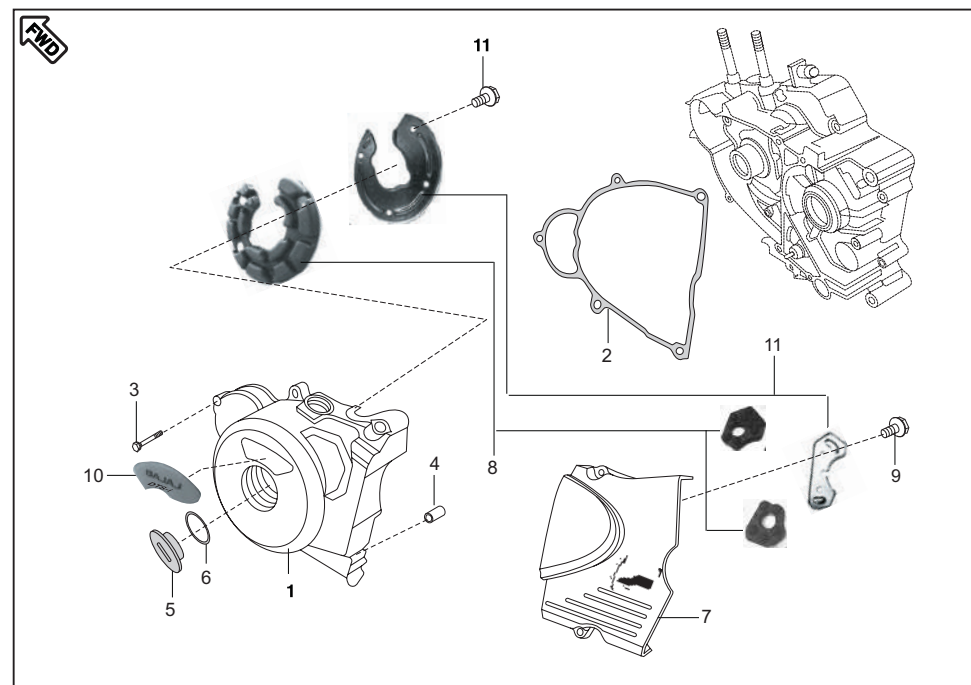
No.	Part No.	Description	Qty/ Veh.	Remarks
16	DG 1014 98	Gasket (For Drain Bolt)	1	Alt. 31101106
17	31 2010 81	Neutral switch	1	
17a	DK 1013 80	Neutral switch	1	From 14Jul08 (C7)
17b	DH 1013 85	Precoated Flanged bolt (M6x16)	1	17a part's
17c	39 1013 21	O ring	1	17a part's
18	DH 1012 64	Gasket Neutral Switch	1	
	DH 1017 84	Gasket Neutral Switch	1	From May 07 (deleted by 17a)
19	DH 1012 69	Baffle	1	
20	39 1414 02	Self tapping Screw	1	
21	39 1845 04	Flanged Bolt	1	
22	39 1677 04	Bolt	8	
23	39 2305 04	Bolt	1	
24	DH 1012 78	Plug Starter Motor	1	
25	59 2000 07	Needle bearing starter gear inner	1	
26	DJ 2010 21	Cable assly. (Battery to Earth)	1	
27	39 2448 11	Plain Washer	1	
28	DH 1014 22	Damper	1	



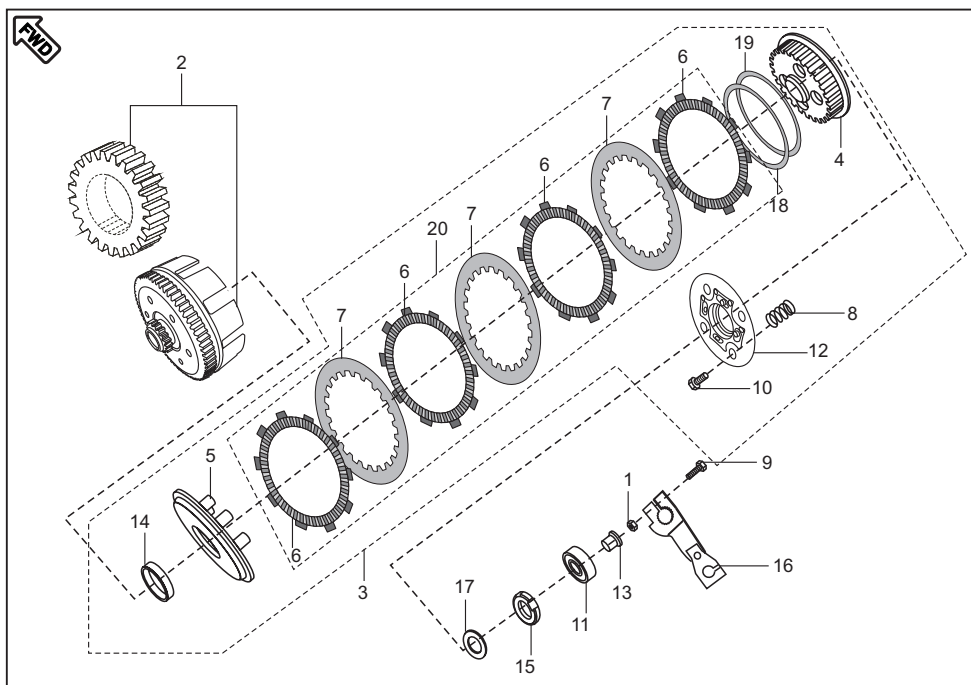
No.	Part No.	Description	Qty/ Veh.	Remarks
1	52 DJ01 96	Cover comp RH	1	
2	DH 1011 97	Grommet Breather	1	
3	30 1011 42	Seal kick Shaft	1	
4	39 1041 19	Seal clutch lever	1	
5	DH 1011 41	Rack	1	
6	DH 1011 42	Shaft clutch release	1	
7	39 2202 07	Parallel pin	1	
8	DG 1014 18	Gauge	1	
9	DS 1012 15	Wire circlip	1	
10	39 1074 04	Bolt	10	
11	39 0999 06	Pin Dowel	2	
12	DH 1010 18	Bracket Clutch Cable	1	
13	DH 1011 54	Gasket cover RH	1	
14	DH 1210 15	Plunger Oil	1	
15	DH 1210 11	Plate Plunger Oil	1	



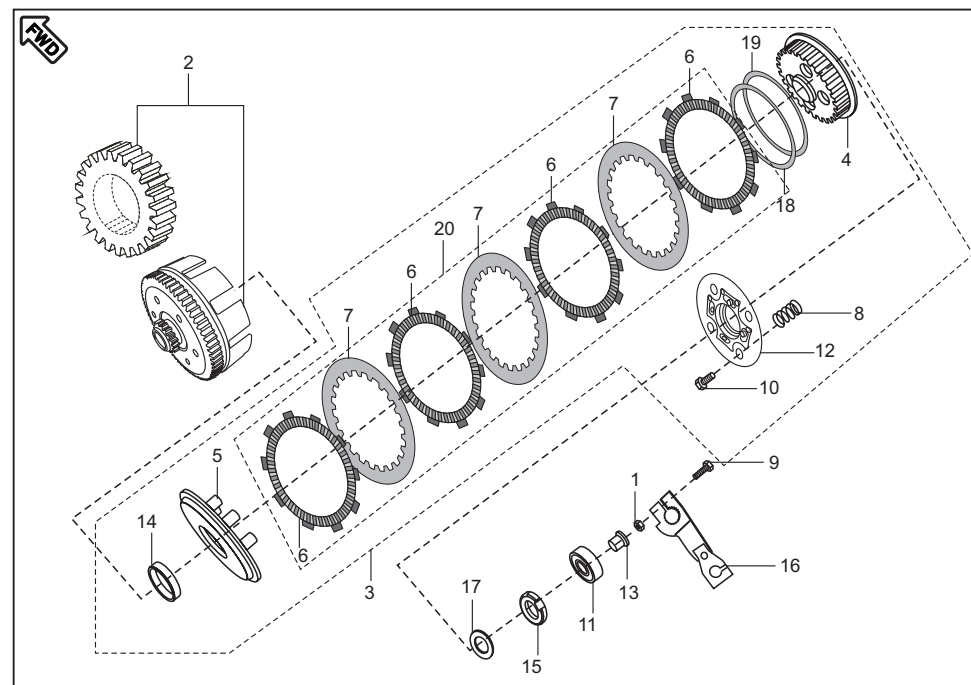
No.	Part No.	Description	Qty/ Veh.	Remarks
16	DH 1210 12	Spring Joint 'A'	1	
17	DH 1012 81	Spring torsion clutch lever	1	
18	39 2443 11	Washer	1	
19	36 DH10 04	Set damper	1	Ref. Page No. 60
20	39 2208 04	Flanged Bolt	8	
21	DS 1012 52	'Bajaj' Decal	1	Fitted on Cover comp.RH
22	DS 1012 01	Bushing	1	
23	36 DH10 05	Set of Plate	1	Ref. Page No. 60
24	DS 1012 63	Oil filler cap with "O" ring	1	



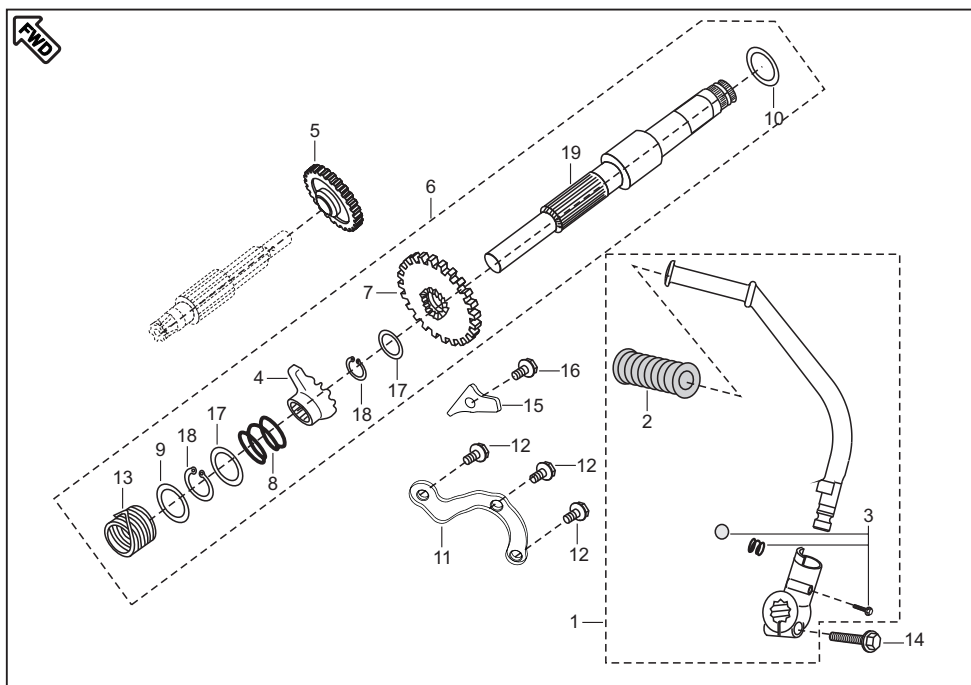
No.	Part No.	Description	Qty/ Veh.	Remarks
1	DJ 1012 09	Cover Magneto	1	
2	DV 1010 42	Gasket Magneto cover	1	From 14Jul08 (C7)
3	39 1074 04	Bolt	7	
4	39 0999 06	Pin Dowel	2	
5	DH 1011 57	Cap Crank Center	1	Alt. 39245221
6	39 1283 21	'O' Ring	1	Alt to 39 2452 21
7	DJ 1012 68	Cover LH RR with sticker	1	w.e.f. Feb. 07
8	36 DH10 06	Set Damper	1	Ref. Page No. 60
9	39 2208 04	Flanged Bolt	6	
10	DS 1012 53	'bajaj' Decal	1	Fitted on Cover magneto
11	36 DH10 07	Set of Plate	1	Ref. Page No. 60



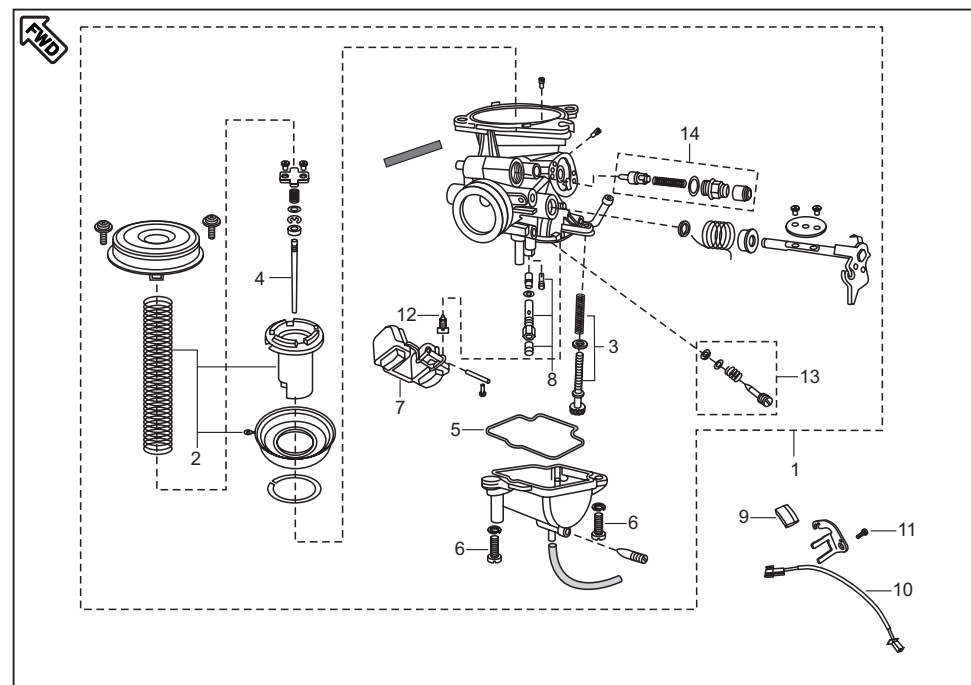
No.	Part No.	Description	Qty/ Veh.	Remarks
1	DH 1012 75	Special Nut	1	
2	36 DH40 06	Set primary driver & driven	1	1
3	DJ 1012 75	Clutch Plate Assly	1	
	DJ 1013 50	Clutch Plate Assly (CLS)	1	
4	DK 1010 01	Clutch Center	1	
	DK 1015 64	Clutch Center (CLS)	1	From 13Feb09 (C13)
5	DK 1011 63	Plate Clutch pressure	1	
	DK 1015 69	Plate Clutch pressure (CLS)	1	From 13Feb09 (C13)
6	DK 1011 49	Disc Clutch friction	5	
	DK 1011 50	Disc Clutch friction 'B' type	1	
	DK 1015 68	Disc Clutch friction 'B' type (CLS)	1	From 13Feb09 (C13)
	DK 1012 55	Disc Clutch friction 'C' type	1	
	DK 1015 67	Disc Clutch friction 'C' type (CLS)	1	From 13Feb09 (C13)
7	DK 1011 51	Plate Clutch	4	
	DK 1015 65	Plate Clutch (CLS)	4	From 13Feb09 (C13)
8	DH 1017 43	Spring Clutch	4	
	DH 1018 61	Spring Clutch (CLS)	5	From 13Feb09 (C13)
9	39 1674 04	Bolt	1	
10	DK 1011 54	Bolt	4	



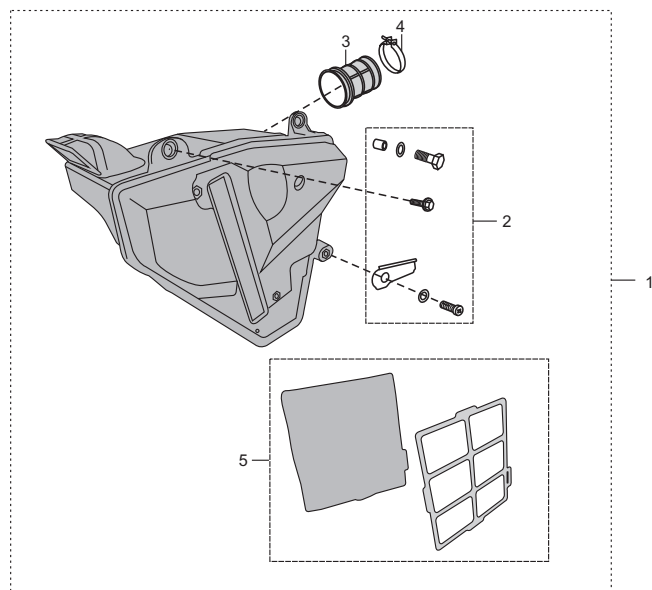
No.	Part No.	Description	Qty/ Veh.	Remarks
11	39 1880 20	Bearing Clutch lifter thrust	1	
12	DK 1013 38	Holder Clutch	1	
	DK 1015 73	Holder Clutch (CLS)	1	From 13Feb09 (C13)
13	DH 1014 85	Rod Clutch lifter	1	
14	DK 1011 26	Spacer clutch	1	
15	DH 1015 20	Nut Primary drive lock	1	LH Thread
16	DH 1011 80	Lever Assly. Clutch	1	
17	39 2200 11	Washer Primary Drive Gear	1	
18	DK 1011 53	Seat Judder Spring	1	
	DK 1015 70	Seat Judder Spring (CLS)	1	From 13Feb09 (C13)
19	DK 1011 55	Spring Judder	1	
	DK 1015 71	Spring Judder (CLS)	1	From 13Feb09 (C13)
20	DK 1013 56	Friction clutch plate kit	1	
	DJ 1013 69	Friction clutch plate kit (CLS)	1	From 13Feb09 (C13)
21	DK 1015 74	Bolt (CLS)	5	From 13Feb09 (C13) N.I.



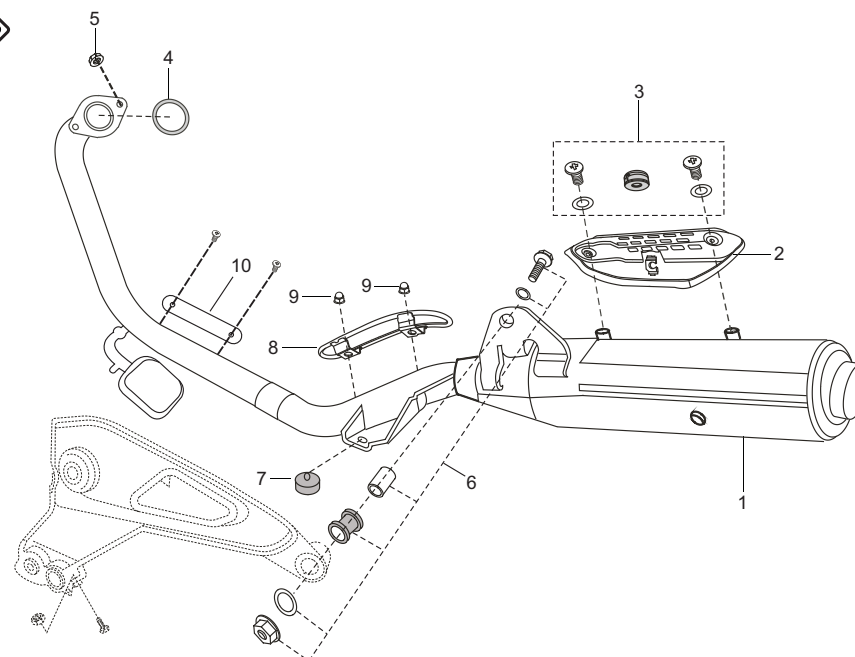
No.	Part No.	Description	Qty/ Veh.	Remarks
1	DH 1015 45	Lever Kick Starter complete	1	Ref. Page No. 60
2	DD 1010 97	Damper	1	
3	36 DH10 08	Boss Kick set	1	
4	DH 1015 37	Ratchet Kick Starter	1	
5	DH 1015 31	Gear Kick Idler	1	
6	DH 1015 40	Spindle Kick Starter Assly	1	
7	DH 1015 72	Pinion Kick Starter	1	
8	DH 1011 21	Spring for Kick Starter Ratchet	1	
9	39 0993 11	Washer Thrust	1	
10	39 2344 11	Plain Washer	1	
11	DH 1015 36	Guide Kick	1	
12	DH 1015 48	Bolt Flanged	3	
13	DH 1011 25	Spring Kick Starter Return	1	
14	DH 1013 21	Bolt flange	1	
15	DH 1015 38	Stopper	1	
16	39 1672 04	Bolt Flanged	1	
17	39 2276 11	Washer	2	
18	39 0738 17	Circlip	2	
19	DH 1015 39	Spindle kick shaft	1	



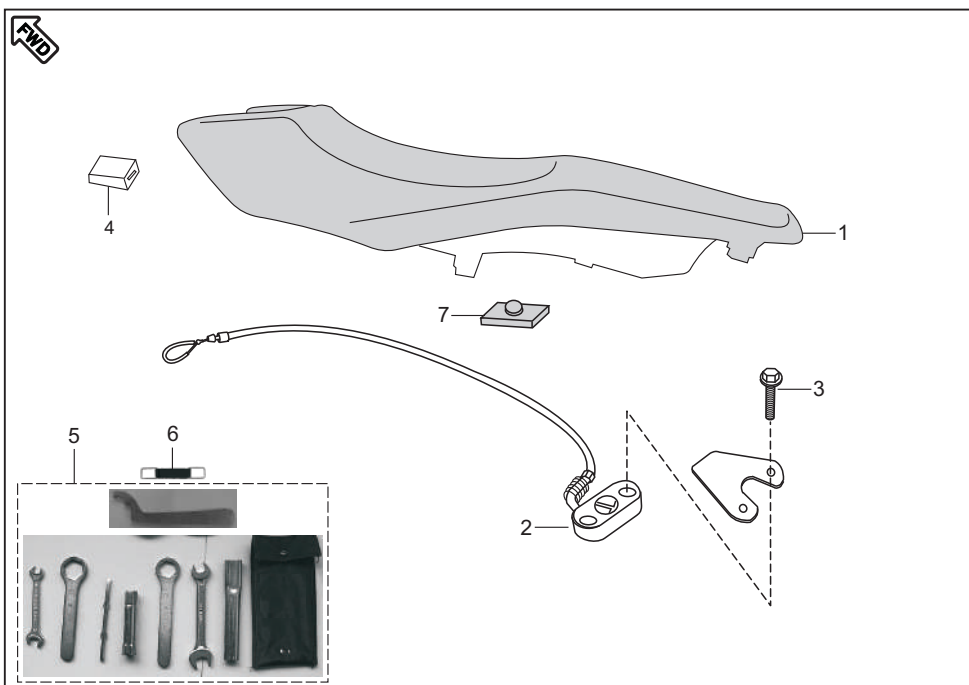
No.	Part No.	Description	Qty/ Veh.	Remarks
1	DJ 1012 32	Carburettor Assly.	1	
2	DJ 1210 51	Vacuum Piston Kit	1	
3	DJ 1210 52	Idling Screw Kit	1	
4	DJ 1210 44	Jet needle(JN)	1	
5	DJ 1210 53	"O" ring	1	
6	DJ 1210 54	Screw	2	
7	DJ 1210 55	Float assly.	1	
8	DJ 1210 56	Jet Holder Kit	1	
9	DH 1211 01	Magnet Assly.	1	
10	DH 1211 02	Reed Switch Assly.	1	
11	39 0840 01	Pan Head Screw	2	
12	DJ 1210 57	Needle Assly.	1	
13	DJ 1210 58	Set Adjuster(PS)	1	
14	DJ 1210 59	Set Plunger assly.	1	



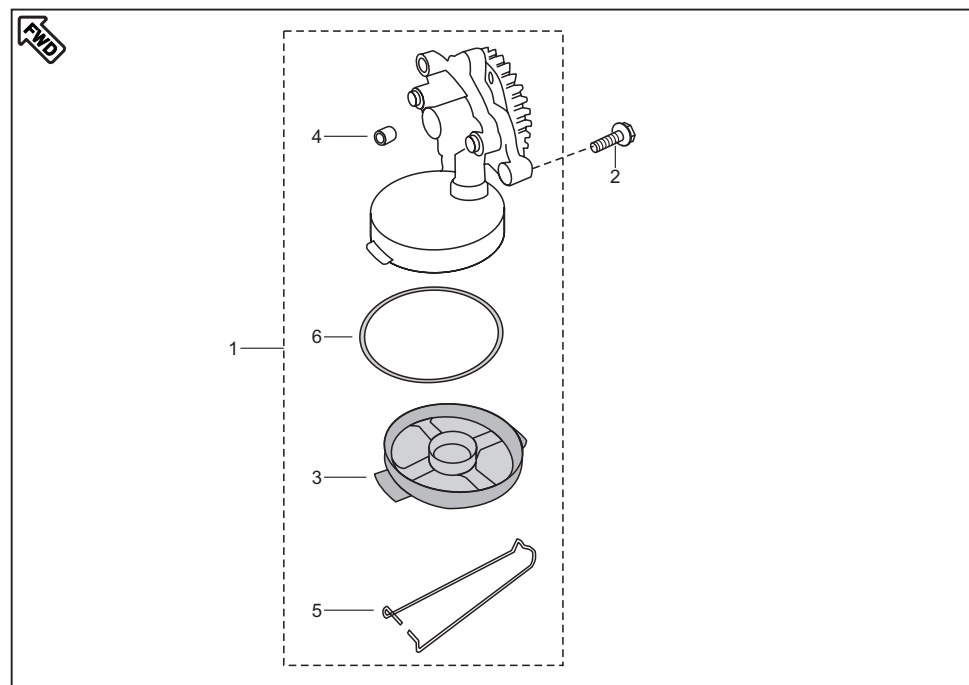
No.	Part No.	Description	Qty/ Veh.	Remarks
1	DJ 1210 40	Air Cleaner comp	1	Ref. Page No. 60 Alt. AA121045 (Fine & Coarse) Ref. page no. 61
2	36 DK00 08	Kit hardware air cleaner	1	
3	DJ 1210 39	ConKinecting Tube	1	
4	AA 1210 71	Clamp	1	
5	36 DK00 15	Kit element air filter	1	



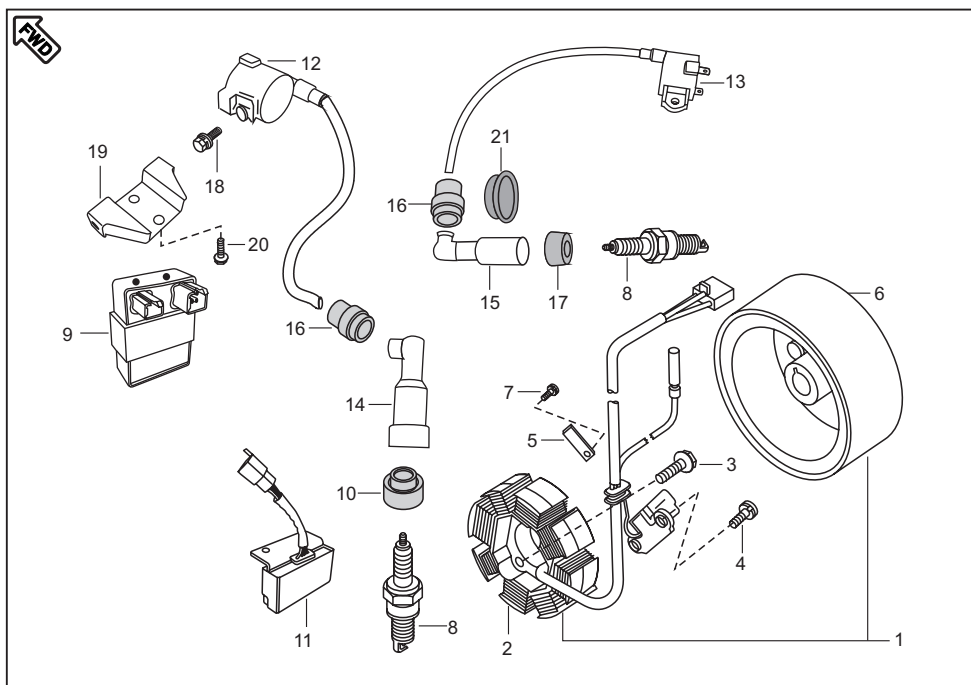
No.	Part No.	Description	Qty/ Veh.	Remarks
1	DJ 1011 61	Silencer Assly. with CAT converter	1	From 15/01/2007
2	DH 1014 68	Shield Muffler (Chrome)	1	From 14Jun08 (F2)
	DH 1018 03	Shield Muffler (Silver)	1	
3	36 DK00 10	Kit hardware shield	1	Ref. Page No. 61
4	DJ 1010 64	Gasket Exhaust	1	
5	39 1970 15	Flanged Nut	2	
6	36 DK00 09	Kit hardware silencer	1	Ref. Page No. 61
7	DG 1611 24	Damper (Main Stand)	1	
8	DH 1015 21	Wire Shield Assly (Chrome)	1	
	DH 1018 05	Wire Shield Assly (Silver)	1	
9	DH 1015 25	Dommed Cap Nut	2	
10	DH 1017 59	Shield Exhaust Tube (Chrome)	1	From 14Jun08 (F2)
	DH 1018 04	Shield Exhaust Tube (Silver)		



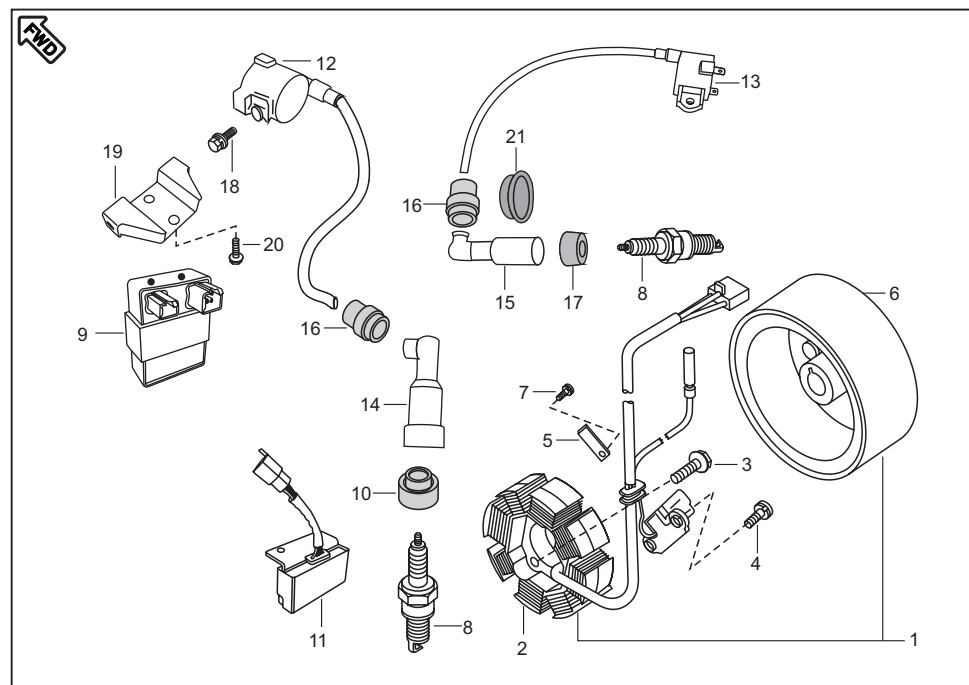
No.	Part No.	Description	Qty/ Veh.	Remarks
1	DJ 2110 03	Seat Assly comp	1	From 18Jun08 (C3)
2	DJ 2110 06	Lock Assly seat	1	
3	39 1902 04	Flanged bolt	2	
4	DK 2110 07	Damper at a seat front	3	
5	DH 2210 06	Tool Kit	1	
6	DH 2110 05	Band Tool Kit	2	
7	DJ 2110 07	Seat damper	9	



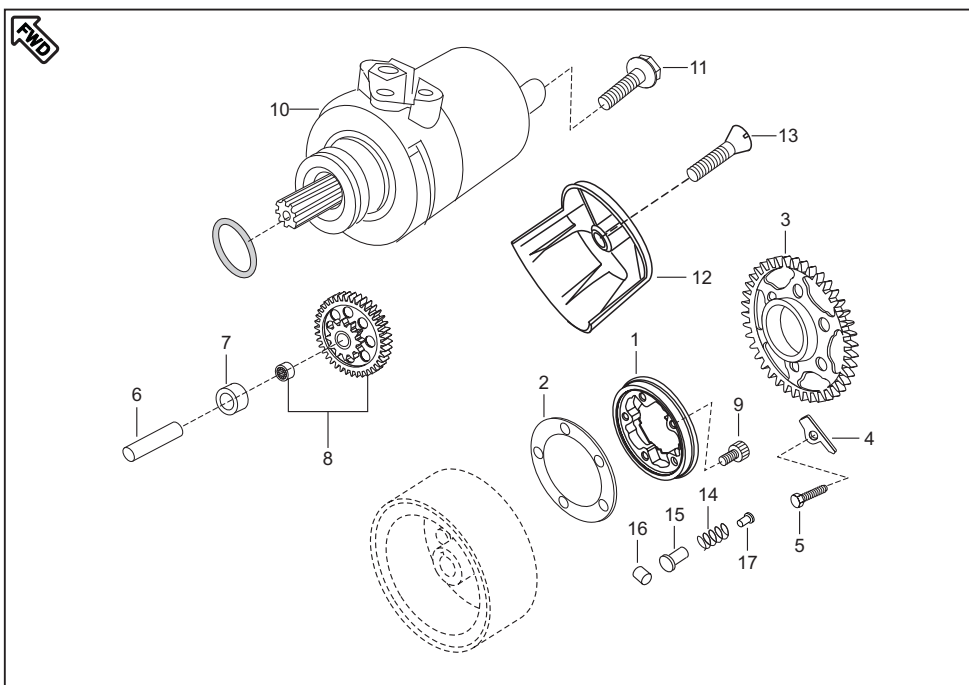
No.	Part No.	Description	Qty/ Veh.	Remarks
1	DH 1210 01	Oil Pump Assly	1	Alt. 52DH0169
2	39 1674 04	Hex. Bolt with flange	3	
3	DH 1210 10	Mesh filter Oil pump	1	
4	39 1686 06	Hollow dowel pin	1	
5	DH 1210 35	Clip Mesh Oil filter	1	
6	39 2194 21	'O' Ring	1	



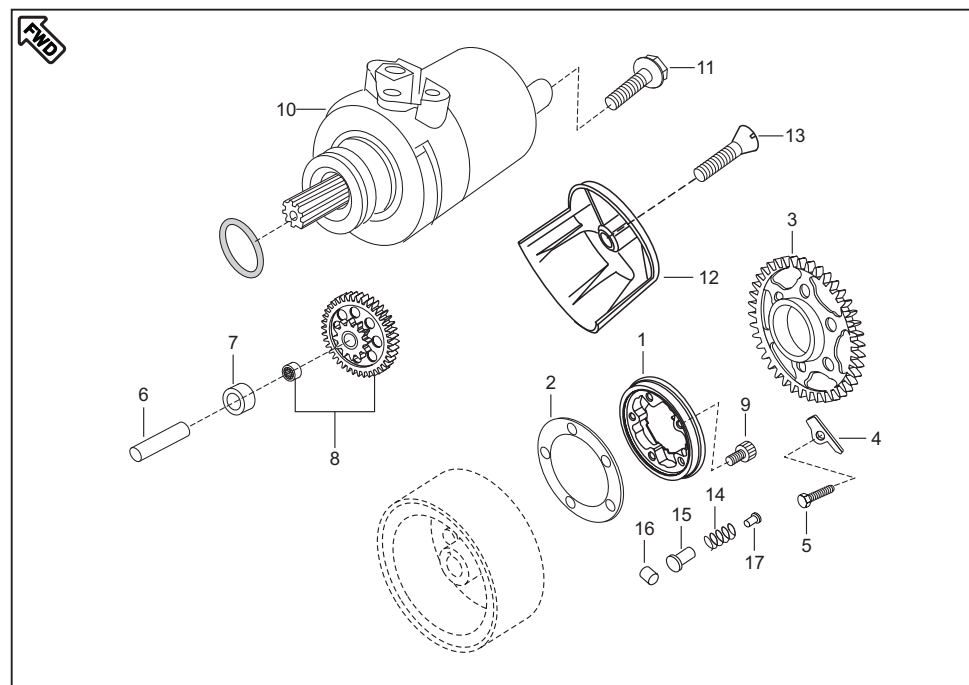
No.	Part No.	Description	Qty/ Veh.	Remarks
1	DJ 1110 93	Magneto Assly.	1	From 26Dec08 (C11)
2	DJ 1110 94	Stator Assly. comp	1	From 26Dec08 (C11)
3	39 1674 04	Hex. Bolt with Flange	2	
4	JM 1000 45	Bolt flange (M6x28)	2	From 26Dec08 (C11)
5	39 0761 01	Pan Head Screw	2	
6	DH 1011 99	Stopper plate (wiring harness)	1	
7				
8	DJ 1110 61	Rotor Assly.	1	w.e.f. July 07
9	39 0746 01	Screw Pan head	1	
10	DG 1110 08	Spark plug	2	
11	DJ 1110 23	C.D.I. Assly.	1	
12	DD 1110 11	Grommet Spark Plug	1	



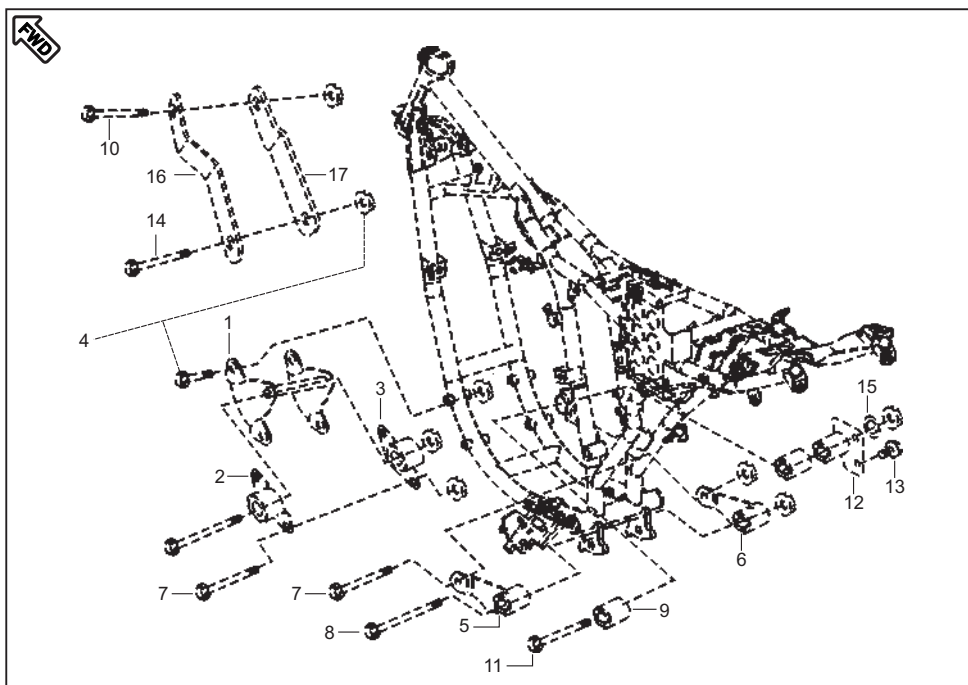
No.	Part No.	Description	Qty/ Veh.	Remarks
11	DJ 2011 02	AC/DC Regulator (Green)	1	
12	DJ 2011 64	AC/DC Regulator (Brown)	1	From 18Jun08 (C3&C6)
13	DH 1110 39	H.T. Coil LH	1	
14	DH 1110 40	H.T. Coil RH	1	
15	DD 1110 48	Cap Spark Plug	1	
16	DH 1110 15	Cap Spark Plug	1	
17				
18	DD 1110 12	Grommet H.T. Cable	2	
19	DH 1110 13	Grommet Spark Plug	1	
20	39 1902 04	Flange Bolt	2	
21	DJ 1610 67	Bracket H.T. Coil	1	
22	39 1680 04	Flange Bolt	2	
23				
24	DH 1110 16	Grommet Sleeve Spark Plug	1	
25	30 2010 64	Band	1	N.I. From 8Aug07 (C1)



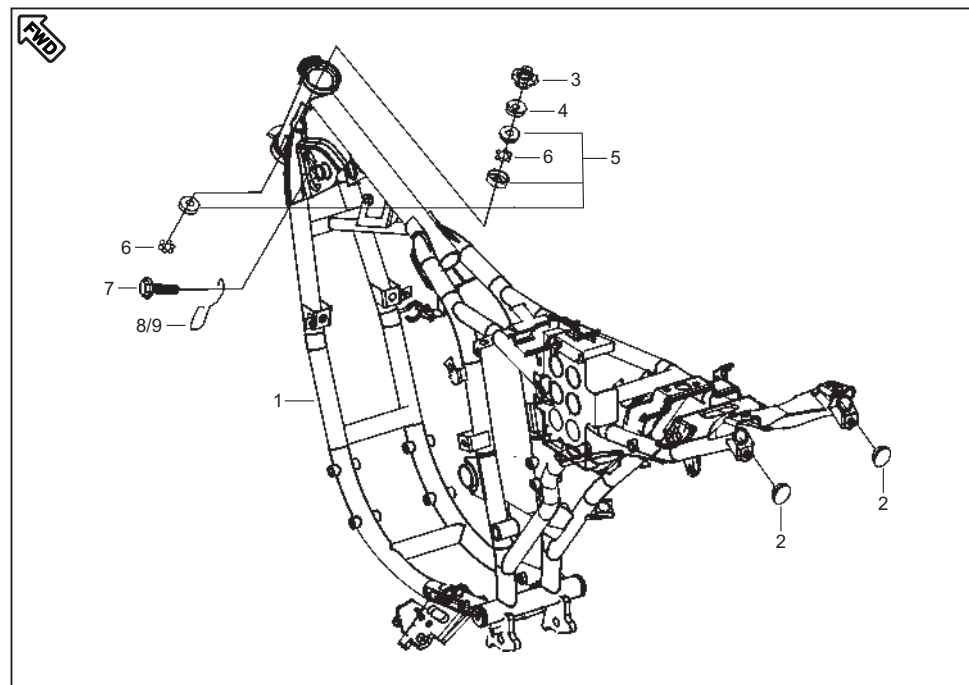
No.	Part No.	Description	Qty/ Veh.	Remarks
1	DH 1017 82	Body comp. starter clutch	1	For stopper plate
2	DH 1017 81	Plate roller clutch	1	
3	DH 1016 58	Gear starter clutch	1	
4	DH 1015 81	Plate starter clutch gear return	1	
5	39 1672 04	Bolt	1	
6	DK 1011 76	Shaft starter counter	1	Alt. DH101184
7	DH 1011 72	Collar starter counter	1	
8	DH 1011 88	Gear comp. starter counter assly.	1	
9	39 2437 04	Bolt socket	3	
10	DH 1110 58	Motor assly. starter (varroc)	1	
	DJ 1110 63	Motor assly. starter (flash)	1	
11	39 1074 04	Bolt	2	
12	DH 1013 72	Cover starter motor	1	
13	39 2285 01	Slotted c'sunk screw	1	
14	DH 1011 64	Spring	5	
15	DJ 1011 09	Bush For Spring Starter	5	



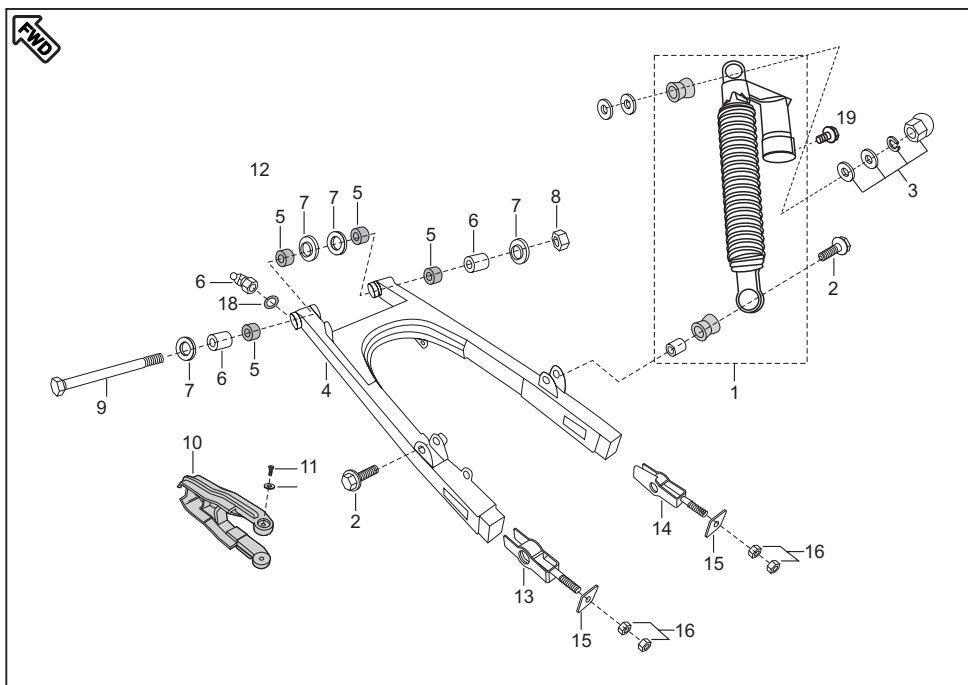
No.	Part No.	Description	Qty/ Veh.	Remarks
16	DH 1011 63	Roller	5	From 2Dec08 (F7) N.I.
17	DH 1015 33	Bush Spring Starter Clutch	5	
18	DK 1110 19	'O' Ring spigot (varroc)	1	
19	DJ 1110 71	'O' Ring kit (varroc)	1	
20	DJ 1110 70	Bush assly kit (varroc)	1	From 2Dec08 (F7) N.I.
21	DS 1110 40	Carbon bush holder plate (varroc)	1	From 2Dec08 (F7) N.I.
22	DJ 1110 87	'O' Ring spigot (flash)	1	From 2Dec08 (F7) N.I.
23	DJ 1110 88	'O' Ring kit (flash)	1	From 2Dec08 (F7) N.I.
24	DJ 1110 90	Bush holder assly (+) (flash)	1	From 2Dec08 (F7) N.I.
25	DJ 1110 86	Bush holder assly (-) (flash)	1	From 2Dec08 (F7) N.I.



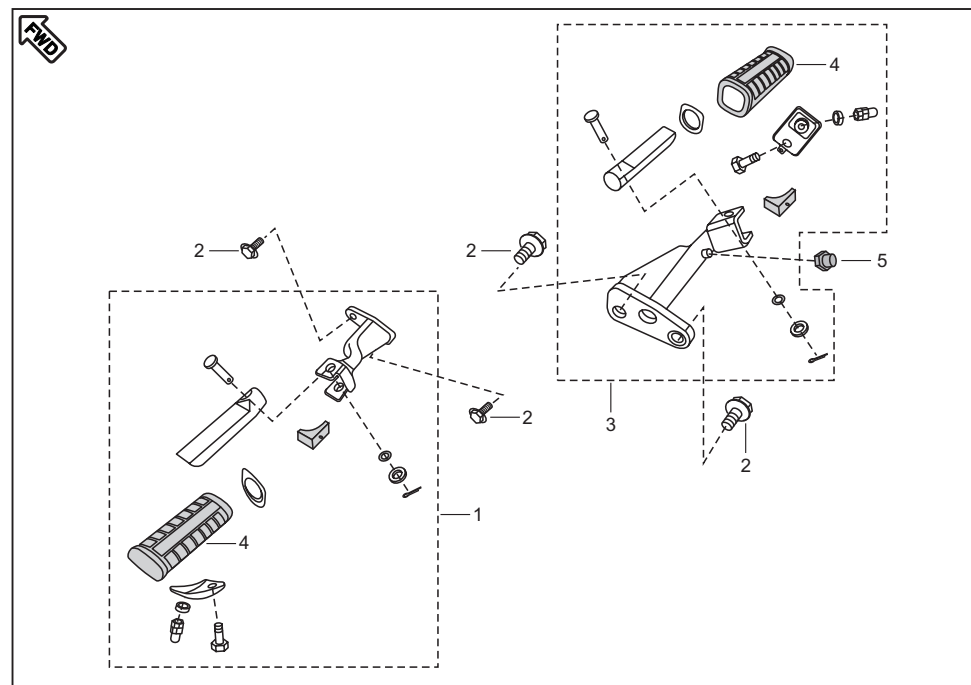
No.	Part No.	Description	Qty/ Veh.	Remarks
1	DH 1611 70	Bkt. Assly.eng.mtg.front	1	Ref. Page No. 61
2	DH 1611 89	Bkt. comp. LH eng. mtg. front	1	
3	DH 1611 90	Bkt. comp. RH eng. mtg. front	1	
4	36 DK00 11	Kit hardware eng. mounting	1	
5	DJ 1611 14	Bkt. comp. LH eng. mtg. lower	1	
6	DJ 1611 15	Bkt. comp. RH eng. mtg. lower	1	Alt. 39 2311 04
7	39 2157 04	Bolt Flanged	3	
8	39 2412 04	Bolt Flanged	1	
9	DH 1612 73	Bush in frame	1	
10	39 1967 04	Bolt	1	
11	39 2414 04	Hex. soc. hd. cap bolt	1	
12	DH 1613 01	Bkt. comp. RH eng. rear	1	
13	39 2310 04	Flanged bolt	2	
14	39 2311 04	Bolt	1	
15	39 2457 11	Washer	1	
16	DJ 1610 88	Bracket LH Engine Hanger	1	
17	DJ 1610 89	Bracket RH Engine Hanger	1	



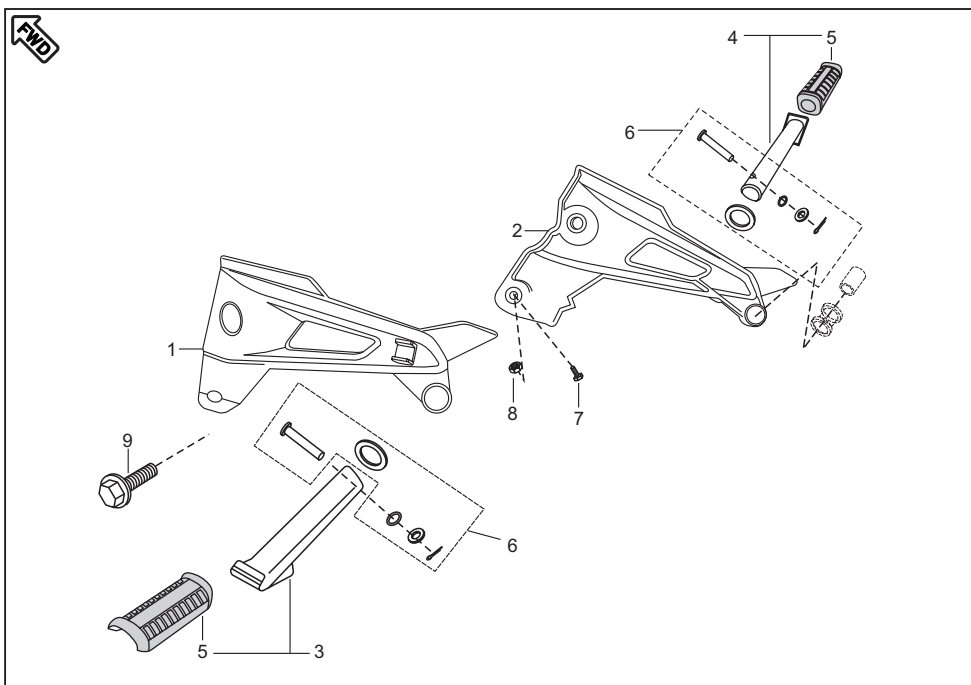
No.	Part No.	Description	Qty/ Veh.	Remarks
1	DJ 1612 64	Frame Assly. comp.	1	Incl. Bush, Races & Cup rear
2	DH 1611 12	Cup rear	2	
3	30 1810 11	Nut	1	
4	DH 1810 14	Cup - Steering	1	
5	36 DS18 02	Bearing Cone Kit	3	
6	36 3140 02	Ball steel	1	Alt. 36311803 Ref. Page No. 61
	DJ 1811 15	Ball steel with cage	2	
7	39 1680 04	Flanged bolt	2	
8	DJ 1611 32	Cable Hook LH	1	
9	DJ 1611 33	Cable Hook RH	1	



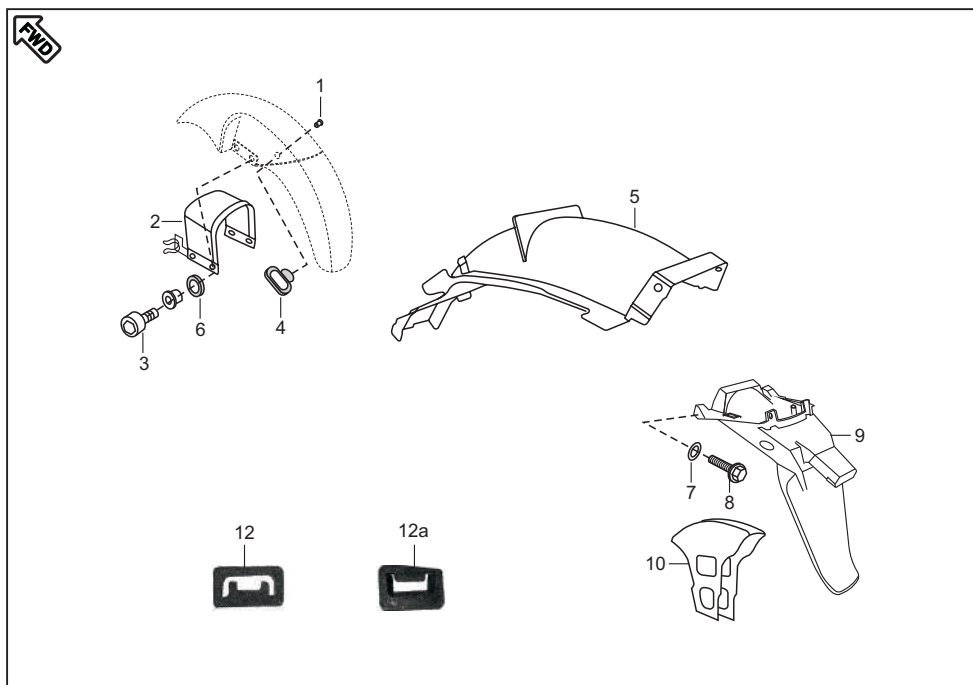
No.	Part No.	Description	Qty/ Veh.	Remarks
1	DJ 1710 19	Rear Shock Absorber	2	Ref. Page No. 61
2	DG 1710 38	Bolt Pre-coated	2	
3	36 DK00 12	Kit bush rear shock	1	
4	DJ 1710 32	Swing arm assly.	1	
5	DH 1710 14	Bush swing arm	4	
6	DH 1710 13	Collar swing arm	2	
7	DH 1710 15	Dust seal swing arm	4	
8	DH 1710 19	'U' nut swing arm	1	
9	DH 1710 12	Shaft swing arm	1	
10	DJ 1710 08	Chain slider	1	
11	39 0553 02	Screw	2	
12	39 0454 11	Plain washer	2	
13	DJ 1510 36	Adjuster chain LH	1	
14	DJ 1510 37	Adjuster chain RH	1	
15	DJ 1510 47	Plate Chain Adjuster	2	
16	39 0292 15	Hexagon nut	4	
17	35 1710 33	Grease nipple	2	
18	39 0740 11	Plain washer(Nylon)	2	
19	DJ 1710 34	Nitrox chamber screw assly	2	
				From 26Dec08 (F4)



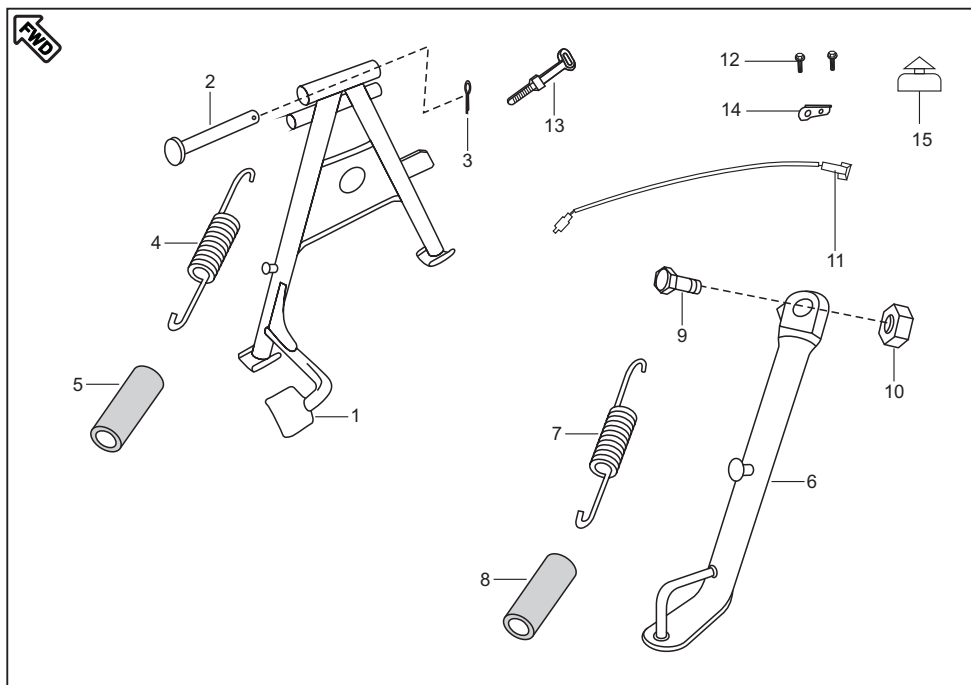
No.	Part No.	Description	Qty/ Veh.	Remarks
1	DJ 1611 30	Main step LH assly. comp.	1	
2	39 2310 04	Flange bolt	4	
3	DJ 1611 31	Main step RH assly. comp.	1	
4	DH 1610 53	Rubber main step	2	
5	DH 1611 94	Kick stopper	1	



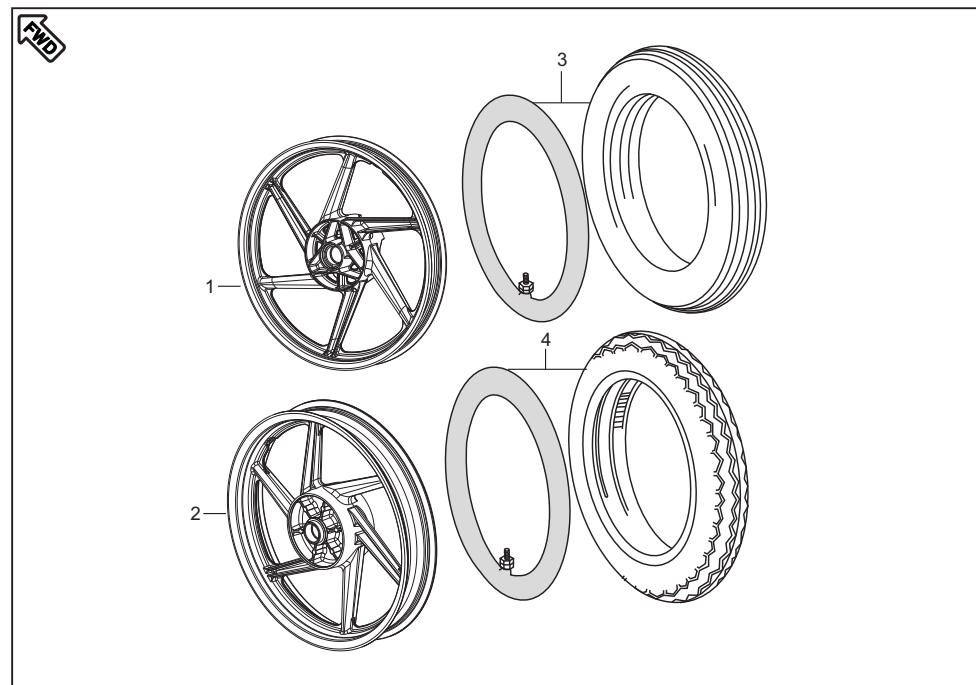
No.	Part No.	Description	Qty/ Veh.	Remarks
1	DJ 1612 56	Holder LH step	1	
2	DJ 1612 57	Holder RH step	1	
3	DH 1613 13	Pillion step assly. comp. LH	1	From Dec.2006
4	DH 1613 15	Pillion step assly. comp. RH	1	From Dec.2006
5	DH 1613 17	Rubber pillion step	2	From Dec.2006
6	36 DK00 13	Kit hardware pillion	2	Ref. Page No. 61
7	39 1069 01	Bolt	1	Stopper bolt
8	39 0292 15	Nut	1	
9	39 1741 04	Flanged Bolt (Mtg holder step LH&RH)	2	Alt. 39258204
10	DX 1610 67	Plate lock pillion step	2	NI
11	DH 1611 00	Spacer main step	2	NI
12	22 1504 51	Bolt cylinder securing	2	NI



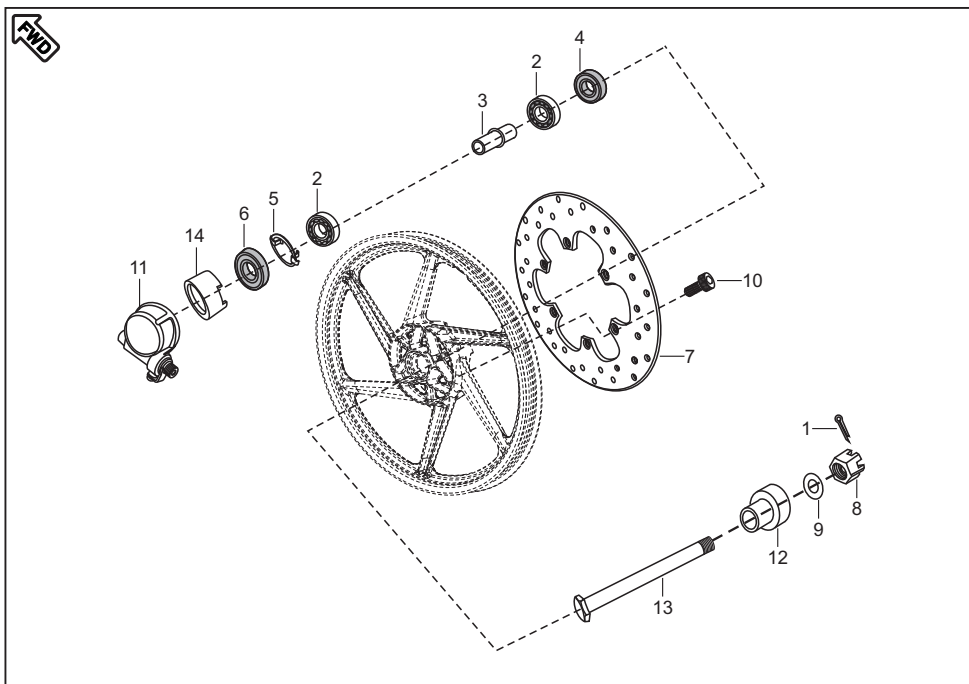
No.	Part No.	Description	Qty/ Veh.	Remarks
1	DJ 1610 69	Nail for Cable Guide	1	From 26Dec08 (C10)
2	DH 1613 04	Brace fender	1	
3	DH 1612 58	Brace fender	1	From 26Dec08 (C10)
4	DG 1810 08	Socket bolt	4	Fender front mtg.
5	DS 1611 25	Cable guide	1	From 26Dec08 (C10)
6	DJ 1612 55	Fender rear front	1	
7	DJ 1610 91	Grommet Front Fender	4	
8	39 0711 11	Plain washer	4	
9	39 1680 04	Flange bolt	2	
10	DJ 1612 54	Fender rear	1	
11	36 DS40 02	Guard Kit	1	
12	DJ 1612 72	Support Assly for Rear Fender	1	N.I.
12a	DH 1613 03	Grommet Rear Fender	1	
12a	DJ 1612 91	Grommet Rear Fender	1	From 13Feb09 (C14)



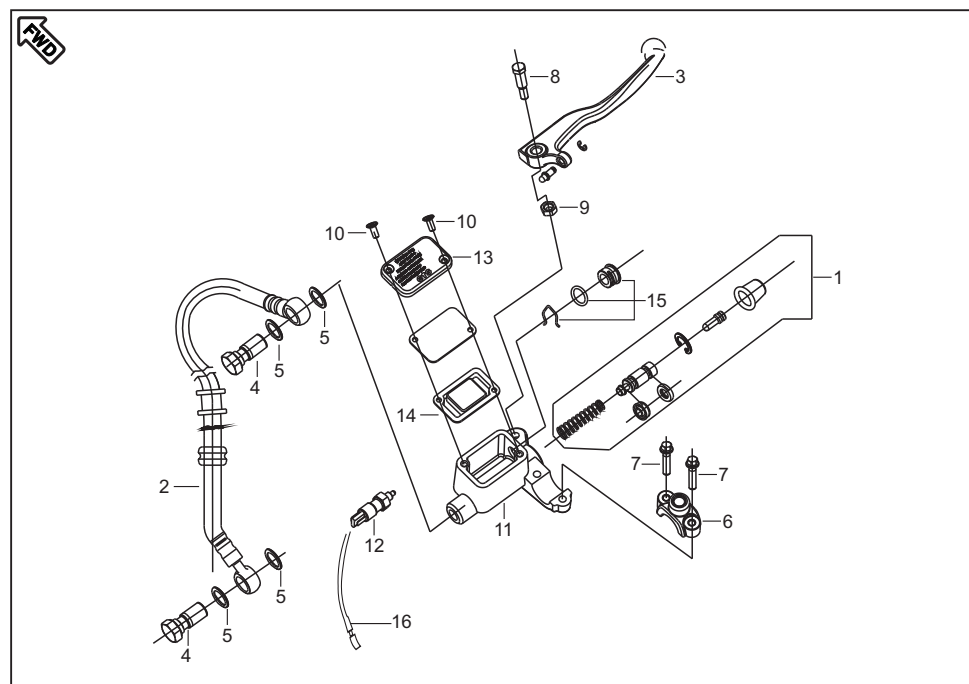
No.	Part No.	Description	Qty/ Veh.	Remarks
1	DJ 1612 14	Stand main	1	
2	30 1611 57	Shaft stand	1	
3	39 0787 08	Pin cotter	1	
4	DH 1611 21	Spring main stand	1	
5	DH 1611 45	Cover spring main stand	1	
6	DJ 1612 18	Stand side	1	
7	DH 1610 66	Spring side stand	1	
8	DH 1611 46	Cover spring side stand	1	
9	DF 1611 02	Bolt	1	
10	39 0422 15	Nut	1	
11	DH 2010 64	Side stand switch	1	From Mar.07
12	39 2060 04	Bolt	2	
13	30 2010 64	Band	1	
14	DJ 1611 88	Bkt. Side stand switch	1	
15	DH 2010 65	Magnet assly.	1	From March 2007



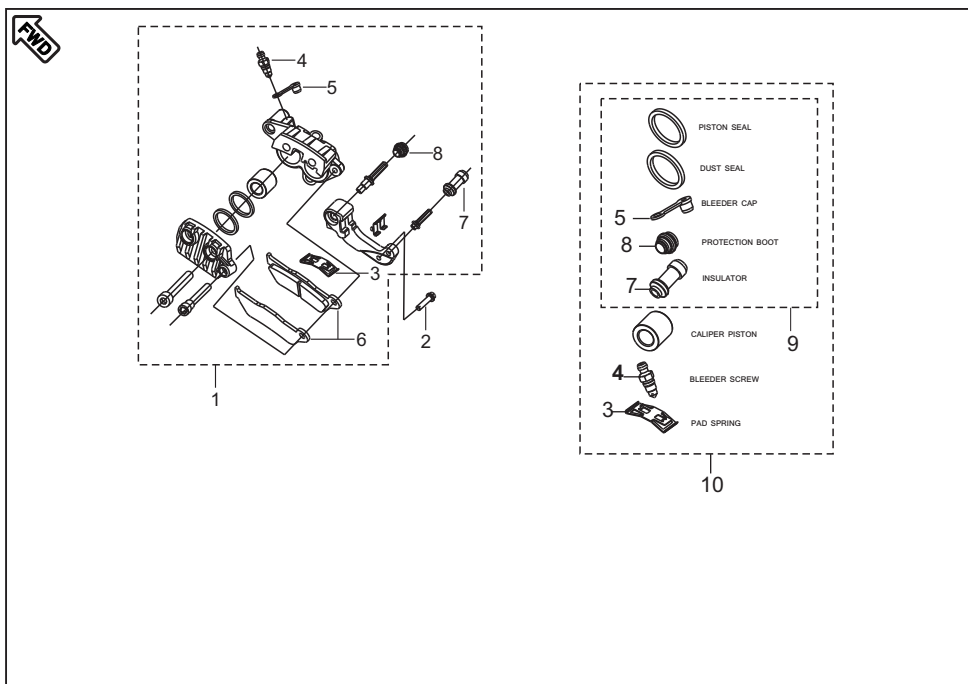
No.	Part No.	Description	Qty/ Veh.	Remarks
1	DJ 1510 77	Wheel rim front	1	
2	DJ 1510 87	Wheel rim rear	1	
3	DS 1510 47	Front tyre assly with tube	1	
4	DS 1510 30	Rear tyre assly with tube	1	



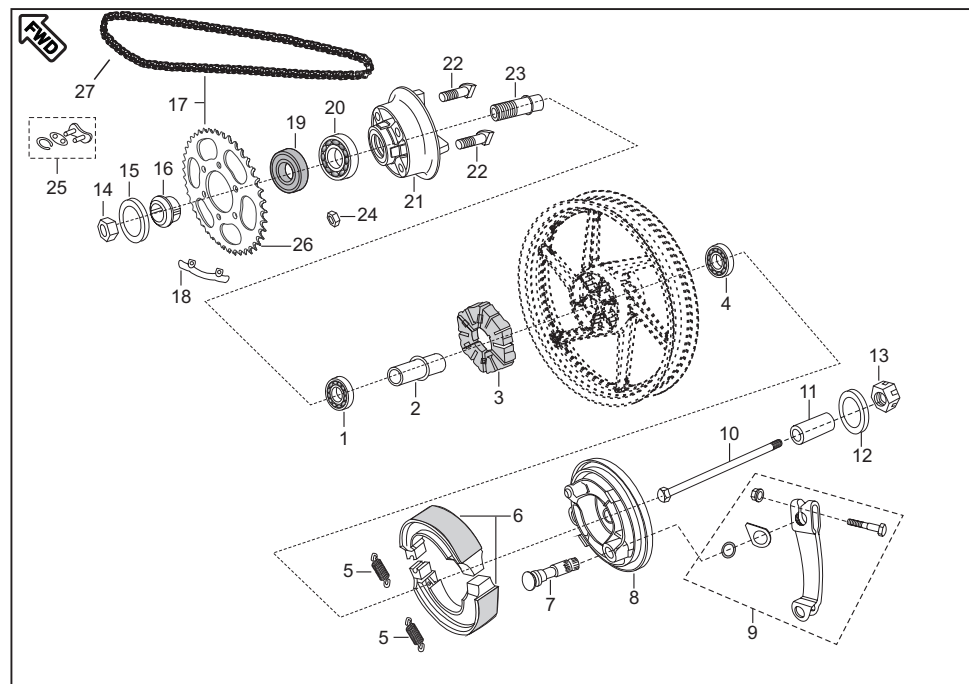
No.	Part No.	Description	Qty/ Veh.	Remarks
1	39 0787 08	Pin cotter	1	Alt. 39236220
2	39 2688 20	Bearing ball	2	
3	DE 1510 06	Spacer assly.	1	
4	30 1510 33	Seal oil	1	
5	DE 1510 12	Plate drive	1	
6	DE 1510 08	Seal oil	1	Alt. DE151013
7	DJ 1510 14	Disc (KBX)	1	
	DJ 1510 65	Disc (ETS)	1	
8	39 0786 15	Hex. slotted nut	1	
9	39 0781 11	Plain washer	1	
10	DD 1510 36	Hex. soc. hd. bolt	6	
11	DH 1510 62	Case meter assly.	1	
12	DS 1510 58	Spacer	1	
13	DJ 1510 41	Front Axle with head	1	
14	DJ 1510 94	Rotor Speedo	1	



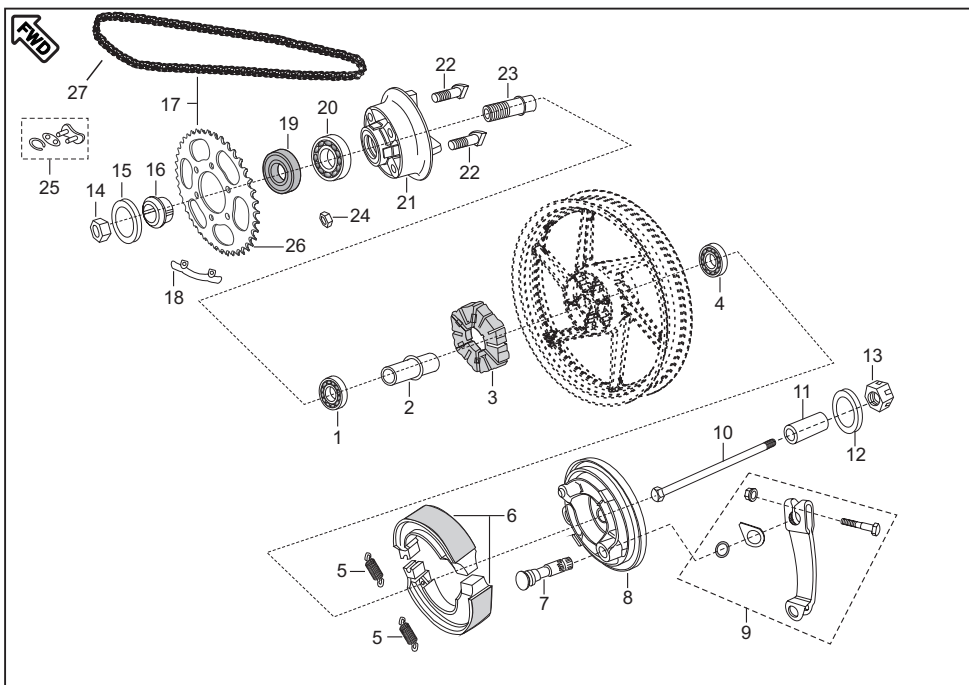
No.	Part No.	Description	Qty/ Veh.	Remarks
1	DJ 1910 23	Major Kit - Master Cylinder	1	ETS
	DE 1910 43	Major Kit - Master Cylinder	1	KBX
2	DJ 1510 76	Hose Brake Front	1	
3	DJ 1910 59	Lever Grip RH (ETS)	1	
	DJ 1910 57	Lever Grip RH (KBX)	1	
4	DJ 1910 25	Banjo Bolt	2	
5	DJ 1910 26	Washer Copper	4	
6	DJ 1910 27	Clamp Holder RH	1	
7	DJ 1910 28	Bolt	1	
8	DJ 1910 29	Bolt Front Brake Lever	1	
9	DJ 1910 30	Nut Flanged	1	
10	DJ 1910 31	Screw	2	
11	DJ 1910 56	Cylinder Master (KBX)	1	
	DJ 1910 58	Cylinder Master (ETS)	1	
12	DJ 2011 09	Front brake switch	1	
13	DJ 1910 34	Reservoir Cover	1	
14	DJ 1910 35	Diaphragm	1	
15	36 DH19 02	Oil Window Kit	1	
16	DJ 2011 08	Cable assly for switch	1	
17	36 DH19 01	Minor Kit	1	N.I.



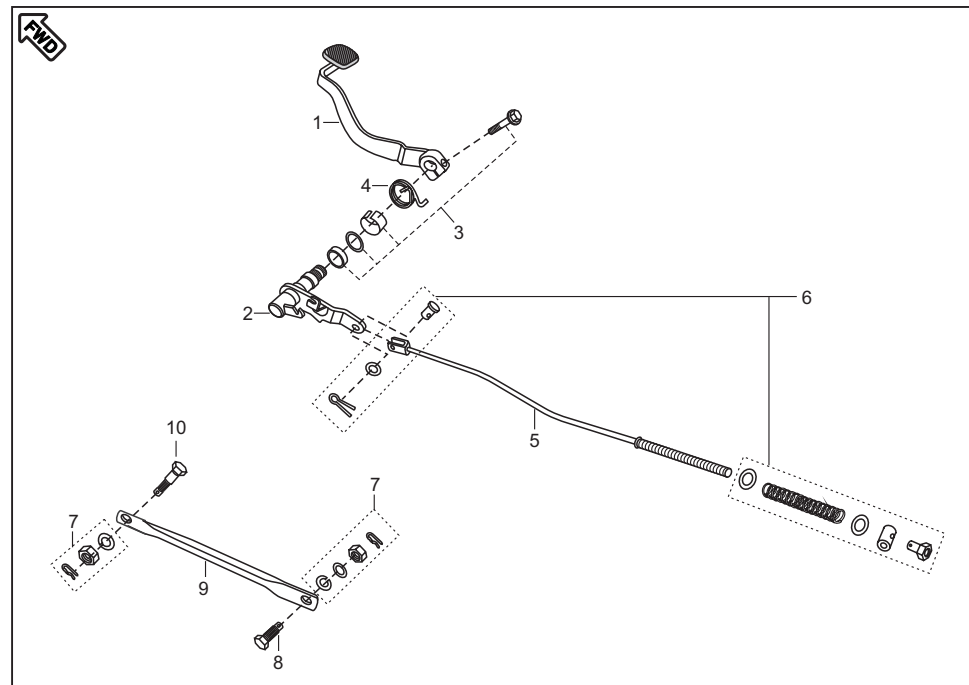
No.	Part No.	Description	Qty/ Veh.	Remarks
1	DJ 1510 67	Caliper Assly. Front	1	
2	39 1769 04	Bolt Flanged	2	
3	DJ 1510 68	Spring Pad	1	
4	DJ 1510 69	Bleeder Screw	1	
5	DJ 1510 70	Bleeder Cap	1	
6	DJ 1510 71	Disc Pad Set	1	
7	DJ 1510 72	Insulator	1	
8	DJ 1510 73	Protection Boot	1	
9	DJ 1510 74	Minor Kit - Caliper	1	
10	DJ 1510 75	Major Kit - Caliper	1	



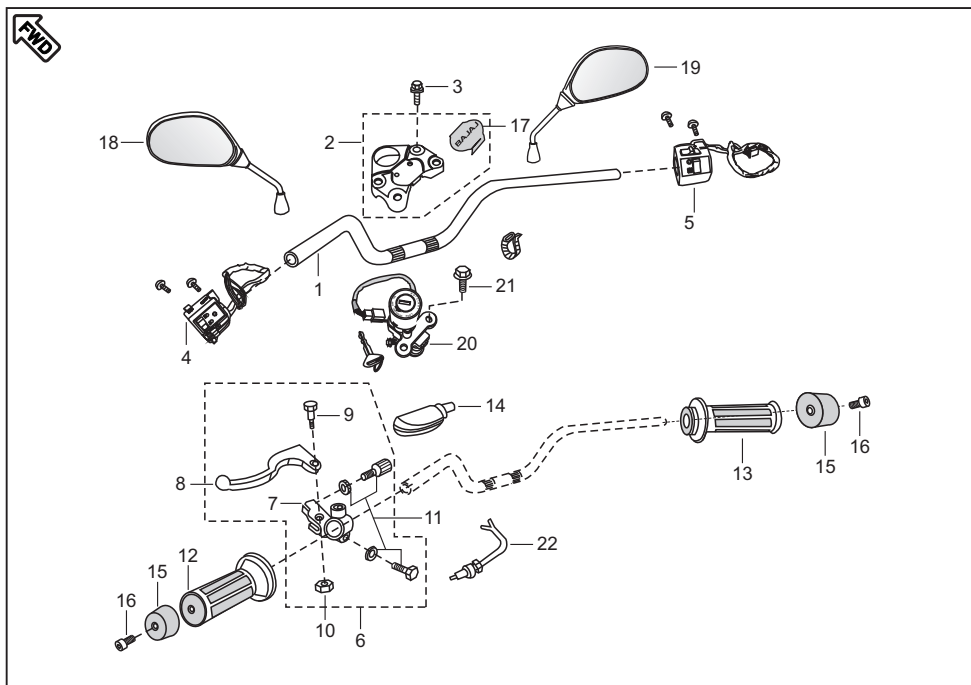
No.	Part No.	Description	Qty/ Veh.	Remarks
1	39 2442 20	Bearing ball	1	
2	30 1510 75	Collar bearing	1	
3	DJ 1510 88	Damper	1	
4	39 2686 20	Bearing ball	1	Alt. 39224120
5	30 1510 69	Spring	2	
6	30 1511 05	Shoe brake assly.	1	
7	30 1510 11	Cam brake	1	
8	DJ 1510 92	Panel rear brake	1	
9	36 DK00 14	Kit lever brake	1	Ref. Page No. 61
10	DJ 1510 32	Axle	1	
11	DJ 1510 34	Collar	1	
12	39 2567 11	Plain washer	1	
13	DH 1710 19	'U' nut	1	
14	39 0801 15	Nut	1	
15	39 2566 11	Plain washer	1	



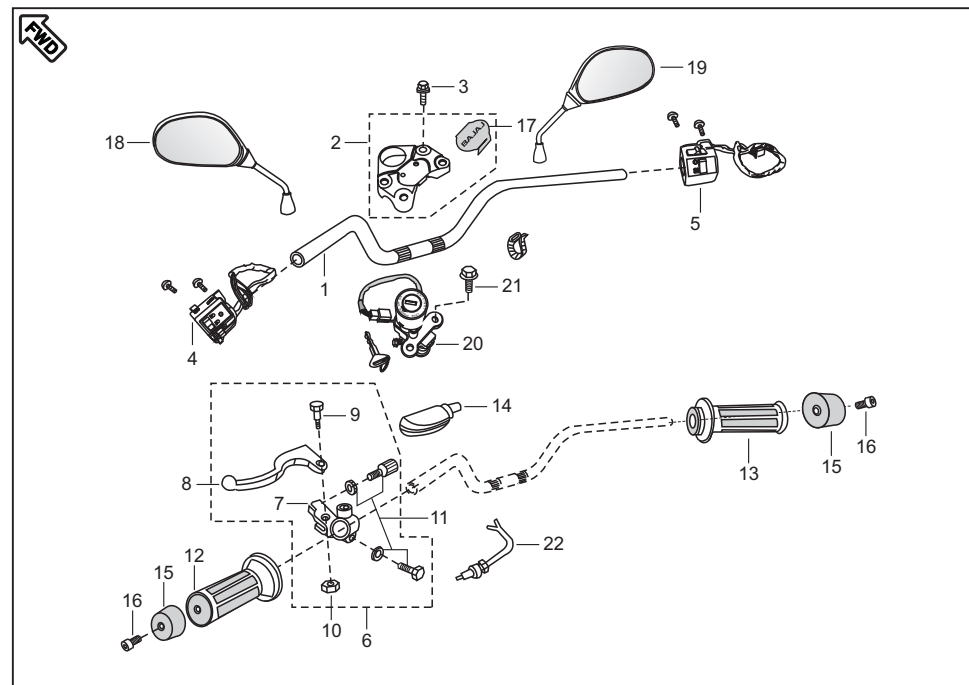
No.	Part No.	Description	Qty/ Veh.	Remarks
16	DJ 1510 35	Collar	1	Alt. 36DJ4005 Ref. Page No. 61
17	36 DJ40 13	Chain Sprocket Kit	1	
18	DS 1510 74	Lock washer	3	
19	30 1510 82	Seal oil	2	
20	39 2240 20	Bearing ball	1	
21	DS 1510 68	Coupling	1	
22	DS 1510 73	'D' Bolt	4	
23	DJ 1510 33	Sleeve	1	
24	39 0794 15	Hex. lock nut	4	
25	DJ 1510 53	Drive Chain Lock	1	
26	DJ 1510 86	Sprocket 43 T - 4 Rubber	1	
27	DJ 1510 96	Chain 124 L - Solid Bush	1	



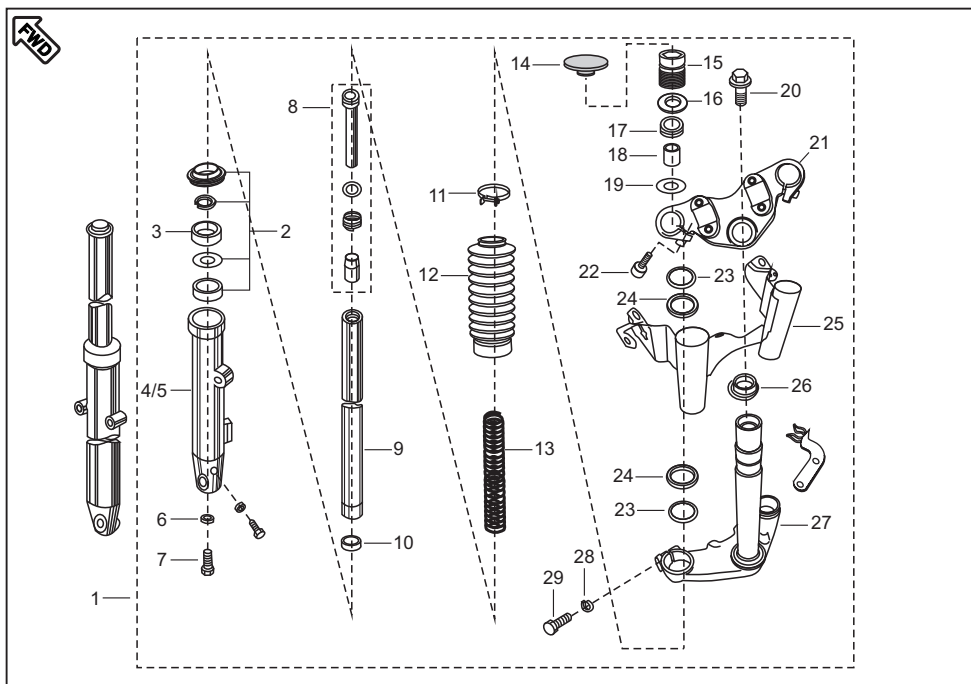
No.	Part No.	Description	Qty/ Veh.	Remarks
1	DH 1910 01	Lever Brake Pedal	1	Ref. Page No. 61
2	DJ 1910 21	Shaft assly. brake Pedal	1	
3	36 DK00 16	Kit hardware brake pedal	1	
4	DH 1910 06	Spring	1	
5	DJ 1910 10	Rod assly. brake	1	
6	36 DK00 17	Kit hardware rod brake	1	Ref. Page No. 62 Ref. Page No. 62
7	36 DK00 18	Kit hardware rod torque	1	
8	30 1510 95	Hex. bolt	1	
9	DJ 1510 42	Rod torque	1	
10	DH 1510 29	Hex. bolt	1	



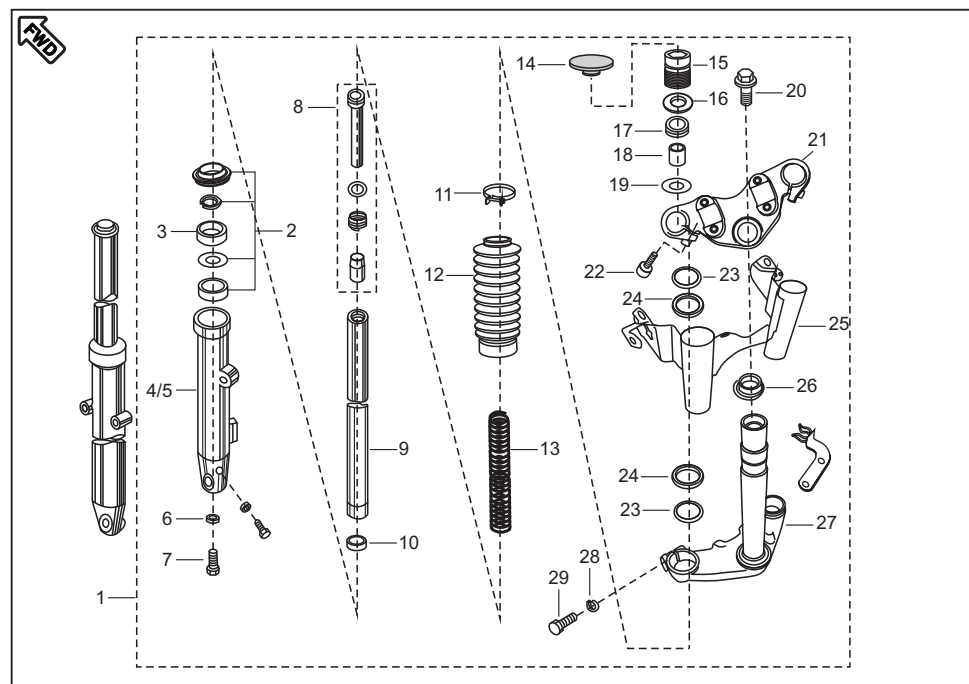
No.	Part No.	Description	Qty/ Veh.	Remarks
1	DH 1810 55	Handle Bar	1	
2	DH 1810 53	Holder Handle	1	
3	39 1714 04	Flanged bolt	4	
4	DH 2010 48	Control switch LH	1	
5	DH 2010 49	Control switch RH	1	
6	DJ 1910 09	Lever assly. grip LH	1	
7	DJ 1910 54	Holder left hand	1	
8	DJ 1910 55	Lever grip left	1	
9	DD 1910 85	Bolt	1	
10	39 1184 15	Self locking nut	1	
11	36 DK00 19	Kit hardware holder kit	1	Ref. page no. 62
12	DH 1910 07	Grip LH	1	
13	DH 1910 16	Grip assly.RH	1	Ref. page no. 62
14	DH 1910 19	Boot for lever	1	
15	DH 1810 22	Handle bar weight	2	



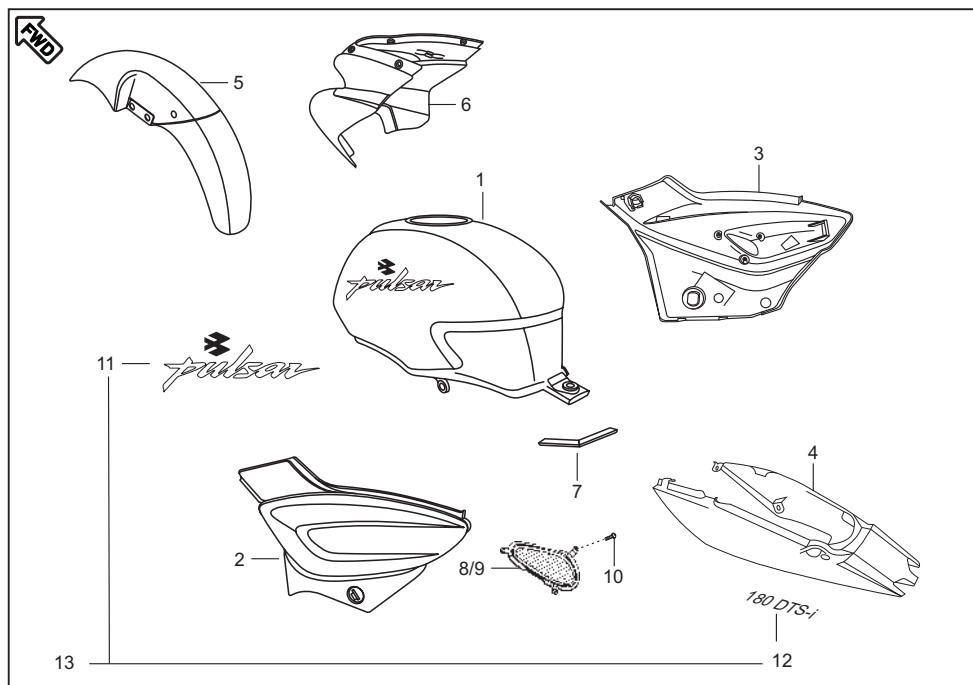
No.	Part No.	Description	Qty/ Veh.	Remarks
16	DH 1810 40	Hex. soc.hd. cap screw	2	Alt. 39 2427 04
17	DJ 1810 39	Pad Holder Handle	1	
18	DJ 2210 03	Mirror assly. LH	1	
19	DJ 2210 04	Mirror assly. RH	1	
20	DS 1810 22	Switch assly.ignition	1	
21	39 1943 04	Flange bolt	2	
22	DJ 2010 35	Clutch Switch	1	
	DJ 2011 95	Clutch Switch	1	From 26Dec08 (C11)



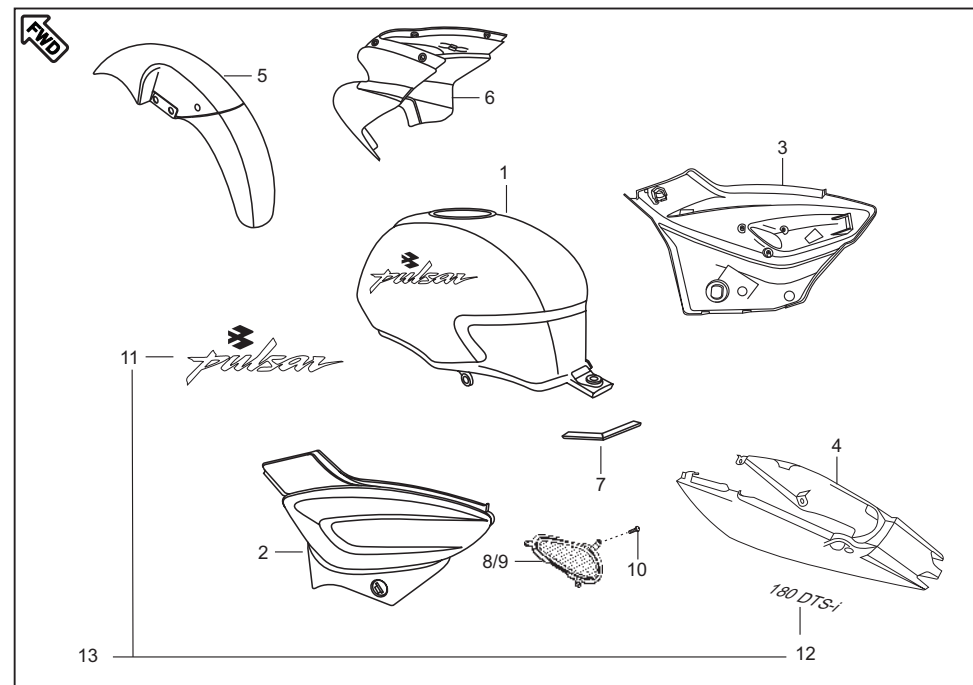
No.	Part No.	Description	Qty/ Veh.	Remarks
1	DJ 1811 00	Fork front	1	without 20,21,22,23,24,25,26
	DJ 1811 36	Fork front (without bellow)	1	From 20Aug08 (C9)
2	36 DK00 20	Kit outer tube	1	Ref. Page No. 62
3	DJ 1810 87	Oil seal	2	
4	DJ 1811 01	Outer Tube LH	1	
	DJ 1811 32	Outer Tube LH (without bellow)	1	From 20Aug08 (C9)
5	DJ 1811 02	Outer Tube RH	1	
	DJ 1811 33	Outer Tube RH (without bellow)	1	From 20Aug08 (C9)
6	30 1810 26	Gasket	2	
7	31 1811 06	Bolt	2	
8	DS 1810 77	Cylinder comp. fork	2	
9	DJ 1811 03	Pipe comp. suspension inner	2	
10	DS 1810 71	Slide Bush	2	
11	DJ 1810 45	Clamp for Bellow	2	N.S. (Deleted by C9)
12	DJ 1810 44	Bellow	2	Deleted by C9
13	DJ 1811 04	Spring front fork	2	
14	DH 1810 09	Grommet Top	2	
15	DH 1810 15	Bolt fork	2	



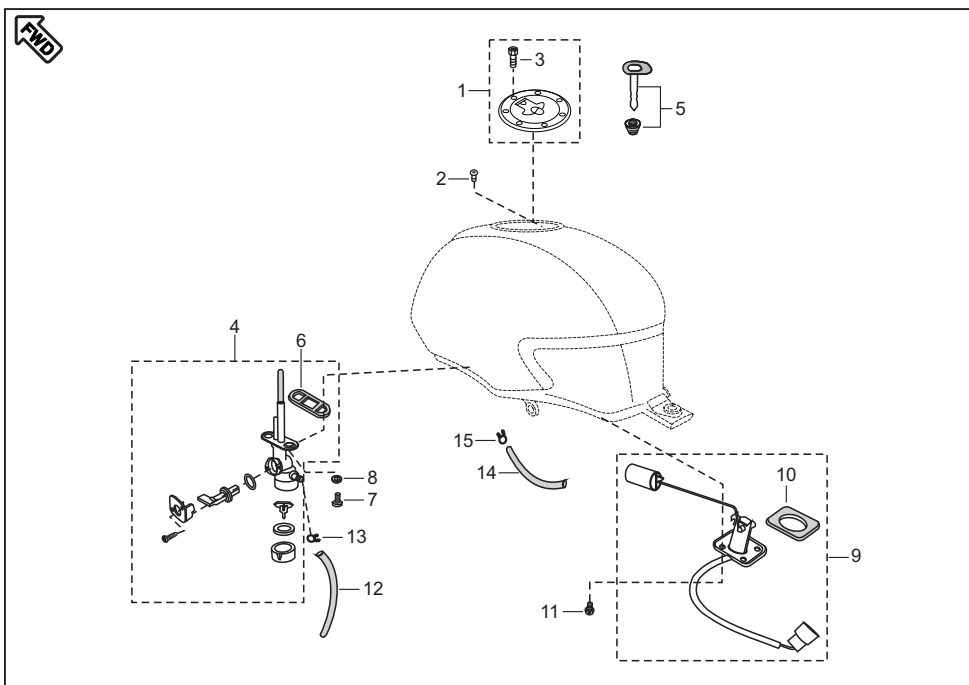
No.	Part No.	Description	Qty/ Veh.	Remarks
16	31 1811 02	'O' ring	2	
17	31 1811 01	Seat fork spring	2	
18	DS 1810 85	Spacer Tube	2	
19	DM 1810 10	Washer	2	
20	31 1811 20	Bolt	1	
21	DH 1810 56	Holder fork upper	1	
22	DG 1810 08	Socket Bolt	2	
23	DJ 1810 85	Cushion Rubber	2	
24	DJ 1810 52	Cover Trail B	4	
25	DH 1810 48	Lamp Shade asly.	1	
26	30 1810 09	Bearing cone	1	
27	DJ 1810 41	Holder fork under	1	
28	39 0789 12	Spring washer	2	
29	39 1813 04	Bolt	2	



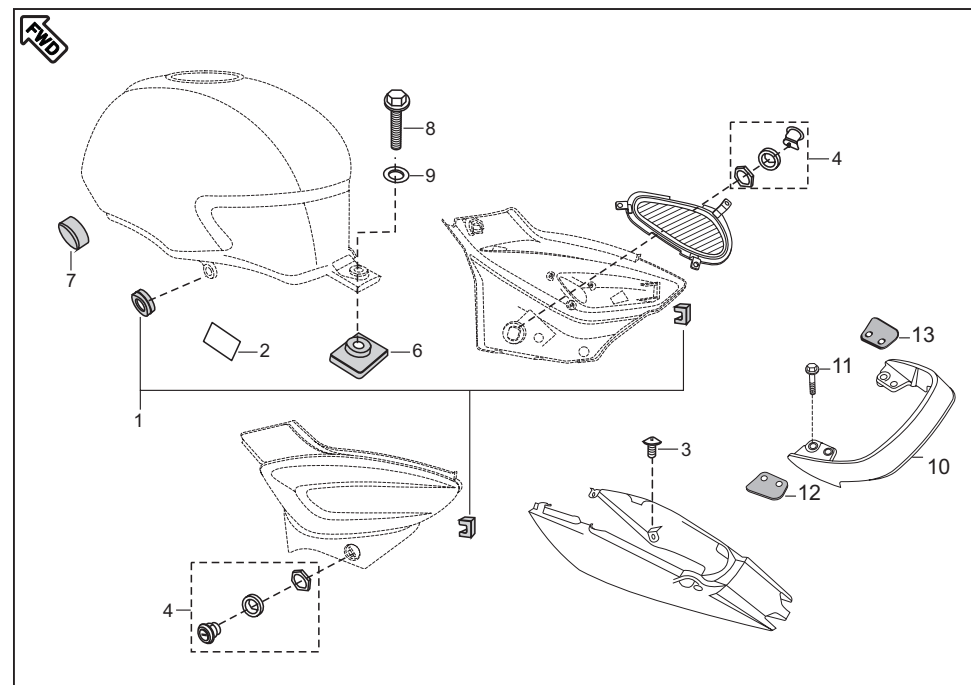
No.	Part No.	Description	Qty/ Veh.	Remarks
1	DH 7102 X3	Fuel Tank with Decal	1	FOR EBONY BLACK
	DH 7102 3A	Fuel Tank with Decal	1	FOR LONG BEACH BLUE
	DH 7102 2T	Fuel Tank with Decal	1	FOR TIT SILVER
	DH 7102 2V	Fuel Tank with Decal	1	FOR COCKTAIL WINE RED
2	DK 7301 X3	Side cover LH	1	FOR EBONY BLACK
	DK 7301 3A	Side cover LH	1	FOR LONG BEACH BLUE
	DK 7301 2T	Side cover LH	1	FOR TIT SILVER
	DK 7301 2V	Side cover LH	1	FOR COCKTAIL WINE RED
3	DK 7302 X3	Side cover RH	1	FOR EBONY BLACK
	DK 7302 3A	Side cover RH	1	FOR LONG BEACH BLUE
	DK 7302 2T	Side cover RH	1	FOR TIT SILVER
	DK 7302 2V	Side cover RH	1	FOR COCKTAIL WINE RED
4	DK 7303 X3	Seat Cowl Assly.	1	FOR EBONY BLACK
	DK 7303 3A	Seat Cowl Assly.	1	FOR LONG BEACH BLUE
	DK 7303 2T	Seat Cowl Assly.	1	FOR TIT SILVER
	DK 7303 2V	Seat Cowl Assly.	1	FOR COCKTAIL WINE RED



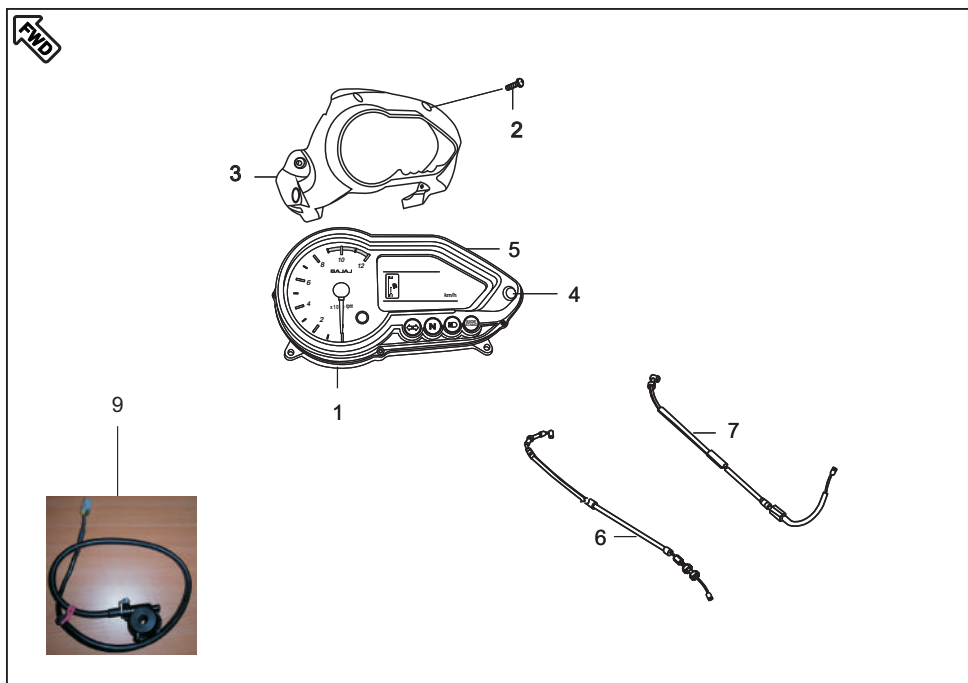
No.	Part No.	Description	Qty/ Veh.	Remarks
5	DJ 7302 X3	Front Fender	1	FOR EBONY BLACK
	DJ 7302 3A	Front Fender	1	FOR LONG BEACH BLUE
	DJ 7302 2T	Front Fender	1	FOR TIT SILVER
	DJ 7302 2V	Front Fender	1	FOR COCKTAIL WINE RED
6	DJ 7401 X3	Fairing	1	FOR EBONY BLACK
	DJ 7401 3A	Fairing	1	FOR LONG BEACH BLUE
	DJ 7401 2T	Fairing	1	FOR TIT SILVER
	DJ 7401 2V	Fairing	1	FOR COCKTAIL WINE RED
7	DH 1410 20	Seat tape	1	
8	DK 1611 23	Cover Side Mesh LH	1	
9	DK 1611 24	Cover Side Mesh RH	1	
10	59 0200 01	Self tap screw	6	
11	52 DJ01 10	Tank Decal Set	1	
12	DH 1613 10	Seat Cowl Decal	2	
13	36 DK00 06	Decal Set	1	



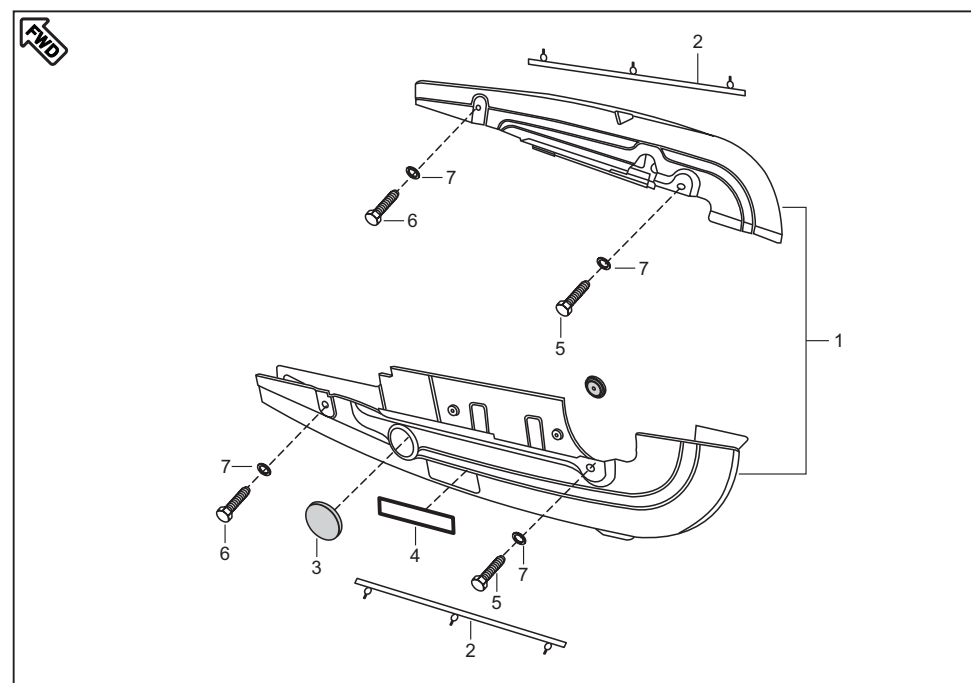
No.	Part No.	Description	Qty/ Veh.	Remarks
1	DH 1410 50	Cap Assly. Tank	1	Alt. 39 1780 01
2	39 0840 01	Pan head screw	1	
3	39 2381 04	Hex. Soc Hd. cap screw	7	
4	DK 1410 01	Tap Assly	1	
5	DJ 1811 10	4 in 1 Lock set With Key	1	
	DH 1410 48	Rotor with key	1	
6	30 1410 39	Packing	1	From 2Jul07 (C1)
7	DD 1410 22	Bolt flanged	2	
8	39 0740 11	Plain Washer	2	
9	DH 2010 38	Gauge Fuel	1	
	DH 2010 62	Gauge Fuel	1	
10	30 1410 28	Gasket fuel Gauge	1	
11	30 1410 32	Bolt	4	
12	DJ 1410 06	Tube fuel	1	
13	30 1410 15	Pipe clip	1	
14	DH 1410 24	Drain tube	1	
15	DJ 1410 02	Clamp	1	



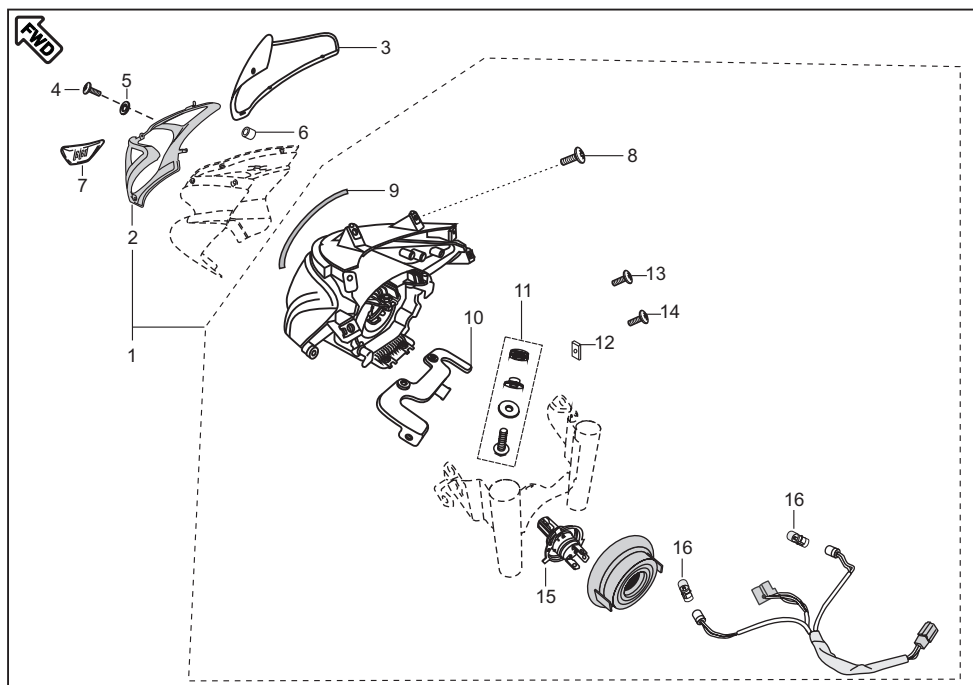
No.	Part No.	Description	Qty/ Veh.	Remarks
1	36 DH16 01	Grommet Kit For side cover	1	Ref. Page No. 62
2	DH 1410 31	Tape tank inner	2	N.I.
3	DG 1611 21	Screw	2	
4	DH 1612 31	Lock for side cover with key	2	
5	DJ 1811 10	Lock Set (4 in 1) with Key	1	
6	DH 1410 23	Damper	1	Alt. DJ161263
7	DJ 1410 08	Damper front	2	
8	39 1556 04	Flanged Bolt	1	
9	39 2424 11	Plain Washer	1	
10	DJ 1612 58	Grab Handle	1	
11	39 2310 04	Bolt Flange	4	
12	DJ 1610 79	Foam LH For grab	1	
13	DJ 1610 80	Foam RH For grab	1	



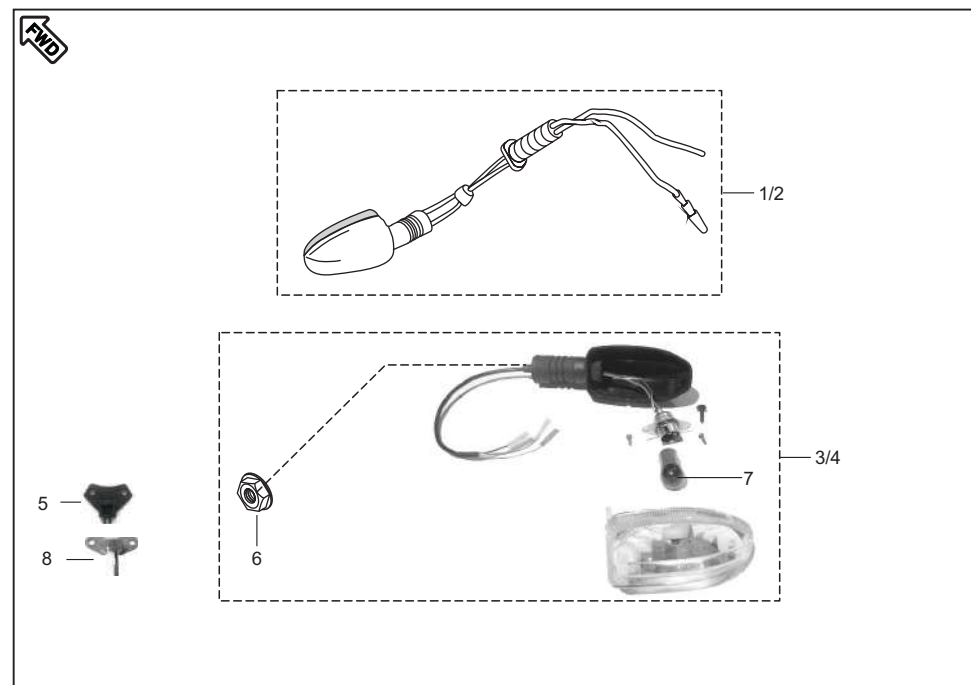
No.	Part No.	Description	Qty/ Veh.	Remarks
1	DJ 1910 70	Speedometer Assly. For Export	1	With Breather
2	39 1778 02	Self Tapping Screw	4	
3	DJ 1811 19	Back Cover	1	
4	DJ 2011 74	Trip Meter Knob	1	
5	DJ 2011 59	Speedo Meter Top Cover	1	
	DJ 2011 69	Housing With Gasket	1	Varroc
	DJ 2011 90	Housing With Gasket	1	Pricol
6	DJ 1910 61	Cable Accelerator	1	
7	DJ 1910 15	Cable Clutch	1	
8	JC 2010 15	Pig Tail	1	N.I.
9	DJ 2011 83	Assly. Speedo Sensor with cable	1	From 26Dec08 (C10)



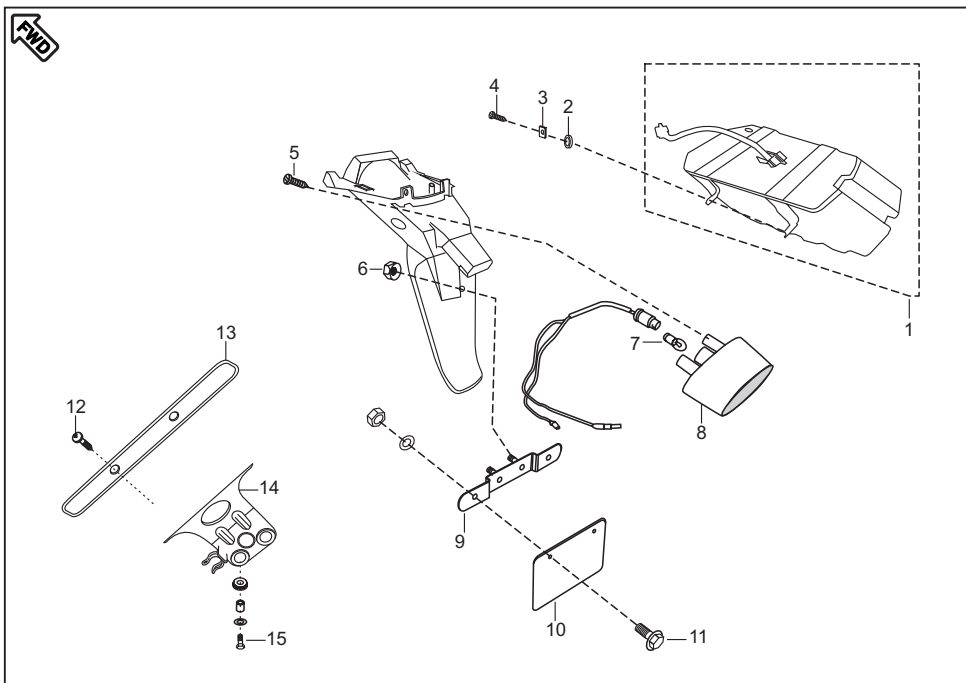
No.	Part No.	Description	Qty/ Veh.	Remarks
1	52 DJ01 66	Case Chain Kit	1	Ref. Page No. 62
2	DH 1612 84	Rubber Pad	2	
3	15 1610 69	Rubber Cap	1	
4	DH 1610 73	Instruction Label	1	
5	39 0897 04	Bolt	2	Rear side Mtg.
6	39 2475 04	Bolt	2	Front side Mtg.
7	39 0711 11	Plain Washer	4	



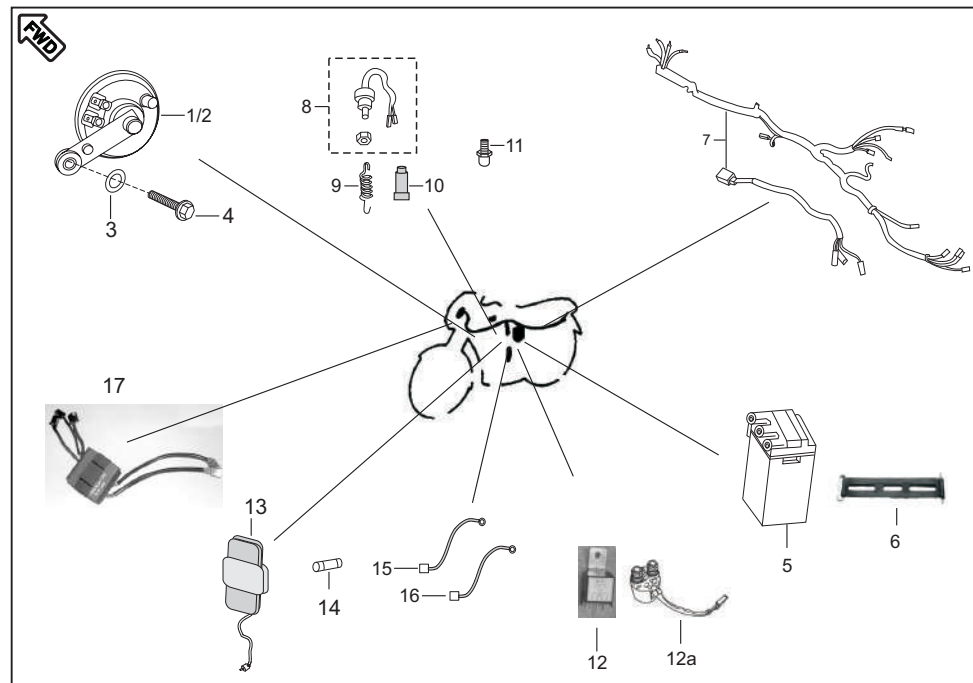
No.	Part No.	Description	Qty/ Veh.	Remarks
1	DJ 2011 32	Head Lamp assly. without bulb	1	Ref. Page No. 62
2	DJ 1811 20	Back cover	1	
3	DJ 1810 33	Wind Shield	1	
4	DF 1810 98	Bolt	4	
5	39 2141 24	Non Metallic Washer	4	
6	DL 1810 10	Well Nut	4	
7	DJ 1810 37	Decal Wind Shield	1	
8	39 1907 01	M5 x 15L mushroom HD	2	
9	DJ 1810 69	Packing Fairing	1	
10	DH 1810 52	Fairing mounting upper bracket	1	
11	36 DK00 21	Kit hardware mtg. bracket	1	
12	DJ 1810 65	Clip Nut	4	
13	39 0716 01	Screw pan cross	2	
14	39 1524 01	Screw pan cross	2	
15	CL 2010 23	Lamp 12V 35/35W-HS1	1	
16	DJ 2010 72	Pilot Bulb	2	



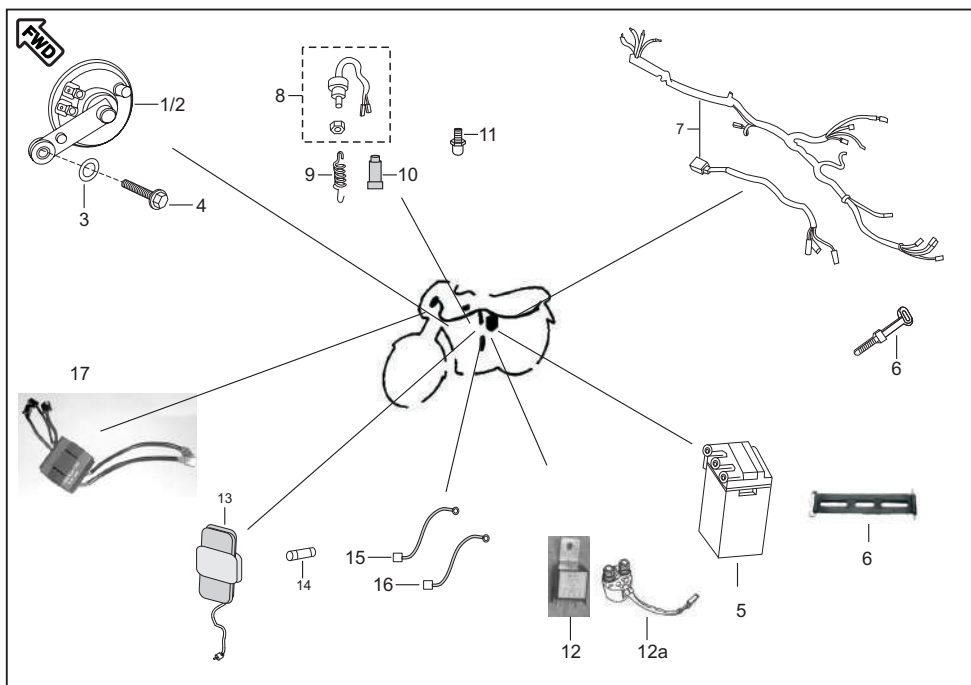
No.	Part No.	Description	Qty/ Veh.	Remarks
1	DJ 2011 48	Blinker Front LH flexible	1	N.I.
2	DJ 2011 49	Blinker Front RH flexible	1	
3	DJ 2011 46	Blinker Rear LH flexible	1	
4	DJ 2011 47	Blinker Rear RH flexible	1	
5	DJ 2011 30 DJ 2011 81	Mgt. assly. blinker self cancellation Mgt. assly. blinker self cancellation	1	
6	39 1970 15	Hex. nut with flange	4	From 26Jul08 (C8)
7	GH 2010 12	Amber Bulb	4	
8	DJ 2011 43 DJ 2011 80	Hall Sensor Assly. Hall Sensor Assly.	1 1	



No.	Part No.	Description	Qty/ Veh.	Remarks
1	DK 2010 03	Tail light with Lamp	1	
2	DH 1612 93	Damper	2	
3	DK 1611 53	Clip Nut	4	
4	39 2592 01	Screw pan cross	4	
5	39 0705 01	Truss Screw	2	
6	39 1972 15	Bolt flange	2	
7	30 2010 29	Lamp 12V-4W	1	
8	DK 2010 24	No. Plate illumination	1	
9	DJ 1610 72	Rear No. plate bkt.	1	
10	DJ 1610 73	Number plate Rear black	1	
11	39 1680 04	Hex Flanged Bolt	2	
12	39 1783 01	Truss Screw	2	For Front No. Plate
13	DJ 1811 13	Number plate front black	1	
14	DH 1612 92	No. plate mounting bracket	1	
15	39 1773 04	Bolt flange	2	



No.	Part No.	Description	Qty/ Veh.	Remarks
1	DH 2010 11	Horn with LH stay	1	
2	DH 2010 14	Horn with RH stay	1	From 13Mar09 (C15)
3	DJ 2011 85	Horn with RH stay	1	From 13Mar09 (C15)
4	39 1507 11	Plain Washer	1	
5	39 1956 04	Flange Bolt	1	
6	DJ 2011 26	Battery (12V-9A) mf dry	1	For export only
7	DJ 1612 47	Band Battery	1	
8	DJ 2011 07	Wiring Harness	1	For spoke wheel
9	DJ 2011 53	Wiring Harness	1	From 8Aug07 (C1)
10	DJ 2011 86	Wiring Harness	1	From 26Dec08 (C11)
11	DS 2010 29	Rear Brake Switch	1	Alt. 31201079
12	DH 1910 12	Spring Brake Switch	1	
13	DH 2010 19	Grommet Rear Brake Switch	1	N.S.
14	39 1680 04	Flange Bolt	1	
15	DK 2010 16	Starter Relay / Damper	1	
12a	DK 2010 78	Starter Relay	1	From 26Dec08 (C11)
13	30 2011 04	Fuse Box Assly.	1	
14	30 2010 85	Fuse	1	
15	DJ 2011 40	Cable assly. (Battery to Earth)	1	



No.	Part No.	Description	Qty/ Veh.	Remarks
16	DJ 2010 20	Cable assly. (Battery to St.Relay)	1	
17	DJ 2011 41	Body Control Unit (BCU) Black	1	Black
	DJ 2011 65	Body Control Unit (BCU) Black	1	From 18Jun08 (C3)
	DJ 2011 94	Body Control Unit (BCU) Brown	1	From 7jul08 (C6)
18	JC 2010 27	Cable Starter Relay to Stater Motor	1	From 26Dec08 (C11) N.I.

KIT LIST

BAJAJ
pulsar **180**

Sr. No.	Kit Part No.	Kit Description	Consisting of Following Parts		
			Part No.	Description	Qty./Kit
1	36DS1001	Cyl.Head O Ring Kit	39239121	O Ring (Cover tappet)	2
			39128321	O ring	2
2	36DJ1004	Valve Kit	DJ101124	Valve Intake	1
			DJ101125	Valve Exhaust	1
3	36DK0005	Valve Repair Kit	DS101083	Retainer valve spring	2
			DS101110	Spring valve inner	2
			DS101111	Spring valve outer	2
			DH101026	Seat valve spring	2
4	36DH1003	Guide Chain Kit	DH101017	Guide chain (Tight)	1
			DH101010	Guide chain (slack)	1
			DK101059	Guide Chain (slack) From Oct.07	1
5	36DK0007	Kit centrifugal oil filter	39220011	Washer	1
			DH101234	Gasket centrifugal oil filter	1
			39226701	Oval screw	1
			DH101066	Join oil dealivery	1
			DH101067	Spring oil delivery	1
			39219908	Pin oil delivery joint	1
6	36DH1004	Set Damper	DH101284	Damper A	1
			DH101285	Damper B	1
			DH101286	Damper C	1
			DH101287	Damper D	1
7	36DH1005	Set of Plate	DH101288	Plate A	1
			DH101289	Plate B	1
			DH101290	Plate C	1
			DH101291	Plate D	1
8	36DH1006	Set Damper	DH101282	Damper Cover Magneto	1
			DH101292	Damper A Cover LH RR	1
			DH101294	Damper B Cover LH RR	1
9	36DH1007	Set of Plate	DH101283	Plate Damper	1
			DH101293	Plate Damper Cover LH RR	1
10	36DH1008	Boss Kick Set	DH101185	Spring Kick Starter Arm	1
			DH101068	Ball steel	1
			DH101131	Base kick lever	1
			DH101320	Hex. bolt with flange	1
11	36DK0008	Kit hardware air cleaner	DK101162	Bracket lock	1
			01110609	Plain washer	1
			39169801	Screw pan cross	1
			39177304	Bolt flange	4
			31121043	Coller	3
			39071111	Plain washer	3

KIT LIST

BAJAJ
pulsar **180**

	Kit Part No.	Kit Description	Consisting of Following Parts		
			Part No.	Description	Qty./Kit
12	36DK0015	Kit element air filter	DK121002	Element air filter fine	1
			DK121003	Element air filter coarse	1
13	36DK0010	Kit hardware shield	DH101301	Seal shield muflar	2
			DH101302	Trust screw	2
			DH101481	Grommet shield	1
14	36DK0009	Kit hardware silencer	39185004	Flange bolt	1
			39242511	Plain washer	1
			DD161071	U nut	1
			DH161155	Damper silencer	1
			DH161157	Tube silencer mounting	1
15	36DK0011	Kit hardware engine mounting	39231204	Bolt flange	4
			39197015	Nut flange	8
			39241304	Bolt flange	1
			DH161245	U Nut	3
16	36DS1802	Bearing cone kit	DH181025	Bearing cone	1
			DH181026	Bearing race	1
			DH181024	Upper bearing race	1
17	36DK0012	Kit bush rear shock absorber	39071411	Plain washer	8
			39071215	Dome cap nut	2
			39073712	Spring washer	2
18	36DK0013	Kit hardware pillion	DJ161186	Plait side pillion stape	2
			DH161061	Pin pillion set	2
			30141031	"O" ring	2
			39104011	Plain washer	2
			39078408	Split pin	2
19	36DK0014	Kit lever brake	30151038	"O" ring	1
			DD151009	Indicator	1
			DJ151059	Lever brake	1
			39244704	Lever brake	1
			39079815	Nut	1
20	36DJ4013	Chain sprocket kit	DH101117	Sprocket drive	1
			DJ151086	Sprocket (43T)	1
			DJ151096	Chain (124 link)	1
21	36DK0016	Kit hardware bracket pedal	39212104	flange bolt	1
			DH191013	Sprocket brake shifter assly	1
			39153721	"O" ring	1
			DH191023	Dust cap	1

KIT LIST



	Kit Part No.	Kit Description	Consisting of Following Parts		
			Part No.	Description	Qty./Kit
22	36DK0017	Kit hardware rod bracket	30191038	Pin	1
			39021911	Plain washer	1
			39080808	Split pin	1
			30191035	Spring	1
			15191026	Pin	1
			30191036	Brake adjustment nut	1
23	36DK0018	Kit hardware rod torque	39078912	Spring washer	2
			39069415	Nut lock	2
			39080708	Pin snap	2
			39154011	Plain washer	1
24	36DK0019	Kit hardware holder LH	30191024	Screw	1
			30191017	Nut	1
			39021911	Plain washer	1
			39072504	Hex bolt	1
25	36DK0020	Kit outer tube	DJ181089	Seal dust	2
			DJ181088	Ring snap	2
			DS181072	Guide bush washer	2
			DS181070	Guide bush	2
26	36DH1601	Grommet kit for side cover	DH161158	Grommet side cover	4
			DH161133	Grommet side cover rear	2
27	52DJ0166	Chin case kit	DH161259	Case chain upper assly	1
			DH161262	Case chain lower assly	1
28	36DK0021	Kit hardware mounting bracket	DJ181029	Coller faring mounting	6
			DJ181064	Grommet fearing mounting	6
			39021111	Plain washer	4
			39155304	Flange bolt	4
29	DH191016	Grip assly. RH	DH191017	Pipe throttle	1
			DH191008	Grip hand RH	1